

Anti- Smad1 (Phospho-Ser465) Polyclonal Antibody



Catalog No.	Size
A100012-01	50 µl
A100012-02	100 µl

Specificity	Anti- Smad1 (Phospho-Ser465) (human Mouse Rat)
Source	Rabbit Polyclonal
Application	WB ELISA IHC
Form	Liquid, 1 mg/ml

Specificity and Sensitivity

Swiss-Prot No.: Q15797

Other Names: BSP-1, BSP1, Dwarf1-A, Dwf-A, JV4-1, MADH1, MADR1, Mad-related protein 1, Mad1, Mothers against DPP homolog 1, Mothers against decapentaplegic homolog 1, Mothers-against-DPP-related-1, SMAD 1, Smad 1, Transforming growth factor- beta signaling protein-1

Specificity and Sensitivity

Smad1 (Phospho-Ser465) antibody detects endogenous levels of Smad1 only when phosphorylated at serine 465.

Source and Purification

The antiserum was produced against synthesized phosphopeptide derived from human Smad1 around the phosphorylation site of serine 465 (I-S-S-V-S^P).

The antibody was affinity-purified from rabbit antiserum by affinity-chromatography using epitope-specific immunogen.

Application Notes

Optimal working dilutions should be determined experimentally by the investigator. Suggested starting dilutions are as follows:

WB: 1:500~1:3000 IHC: 1:50~1:100

ELISA: 1:20000

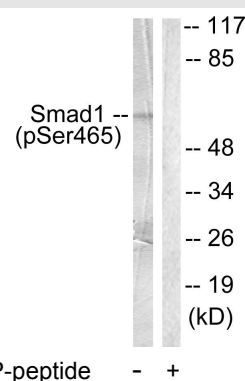
Storage Buffer

Rabbit IgG in phosphate buffered saline (without Mg²⁺ and Ca²⁺), pH 7.4, 150mM NaCl, 0.02% sodium azide and 50% glycerol.

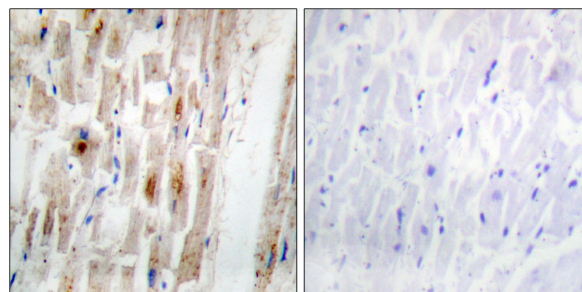
Storage Instructions

Stable for 1 year at -20°C from date of shipment. For maximum recovery of product, centrifuge the original vial after thawing and prior to removing the cap. Aliquot to avoid repeated freezing and thawing. Aliquot will be stable at 4°C for 3 months.

Images



Western blot analysis of extracts from HeLa cells treated with Serum (10%, 15mins), using Smad1 (phospho-Ser465) antibody



P-peptide - +

Immunohistochemical analysis of paraffin-embedded human heart tissue, using Smad1 (phospho-Ser465) antibody.