

# Anti- Akt (Phospho-Ser473) Polyclonal Antibody



Catalog No.	Size
A100018-01	50µl
A100018-02	100µl

<b>Specificity</b>	Anti- Akt (Phospho-Ser473) ( Human Mouse Rat )
<b>Source</b>	Rabbit Polyclonal
<b>Application</b>	WB ELISA IHC IF
<b>Form</b>	Liquid, 1 mg/ml

## Background Information

**Swiss-Prot No.:** P31749/P31751/Q9Y243

**Other Names:** AKT; AKT1 kinase; C-AKT; kinase Akt1; PKB; PKB-alpha; Protein kinase B; RAC; RAC-alpha serine/threonine kinase; RAC-PK-alpha

## Specificity and Sensitivity

Akt (Phospho- Ser473) Antibody detects endogenous levels of Akt only when phosphorylated at Ser473.

## Source and Purification

The antiserum was produced against synthesized phosphopeptide derived from human Akt around the phosphorylation site of Serine473 (Q-F-S<sup>P</sup>-Y-S).

The antibody was affinity-purified from rabbit antiserum by affinity-chromatography using epitope-specific immunogen.

## Application Notes

Optimal working dilutions should be determined experimentally by the investigator. Suggested starting dilutions are as follows:

WB: 1:500~1:3000 IHC: 1:50~1:200

IF: 1:100~1:500 ELISA: 1:1000

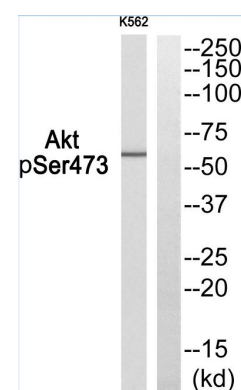
## Storage Buffer

Rabbit IgG in phosphate buffered saline (without Mg<sup>2+</sup> and Ca<sup>2+</sup>), pH 7.4, 150mM NaCl, 0.02% sodium azide and 50% glycerol.

## Storage Instructions

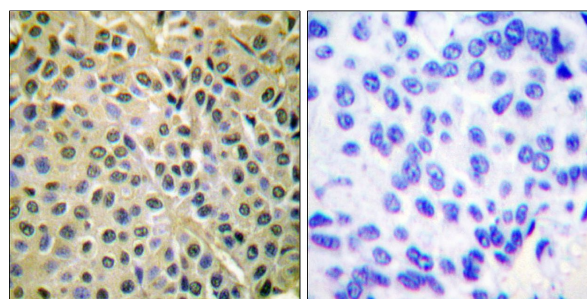
Stable for 1 year at -20°C from date of shipment. For maximum recovery of product, centrifuge the original vial after thawing and prior to removing the cap. Aliquot to avoid repeated freezing and thawing. Aliquot will be stable at 4°C for 3 months.

## Images



Peptide: - +

Western blot analysis of extracts from K562, using Akt (Phospho-Ser473) Antibody.



Peptide: - +

Immunohistochemistry analysis of paraffin-embedded human breast carcinoma tissue, using Akt (Phospho- Ser473) antibody.