

Anti-Acetyl-CoA Carboxylase (Phospho-Ser80) Polyclonal Antibody



Catalog No.	Size
A100021-01	50 µl
A100021-02	100 µl

Specificity	Anti- Acetyl-CoA Carboxylase (Phospho-Ser80) (Human Mouse Rat)
Source	Rabbit Polyclonal
Application	WB ELISA IHC
Form	Liquid, 1 mg/ml

Specificity and Sensitivity

Swiss-Prot No.: Q13085

Other Names: ACAC, ACACA, ACC-alpha, ACCA, Acetyl-CoA carboxylase 1, EC 6.3.4.14, EC 6.4.1.2

Specificity and Sensitivity

Acetyl-CoA Carboxylase (phospho-Ser80) antibody detects endogenous levels of acetyl-CoA carboxylase only when phosphorylated at serine 80.

Source and Purification

The antiserum was produced against synthesized phosphopeptide derived from human acetyl-CoA carboxylase around the phosphorylation site of serine 80 (S-M-S^p-G-L). The antibody was affinity-purified from rabbit antiserum by affinity-chromatography using epitope-specific immunogen.

Application Notes

Optimal working dilutions should be determined experimentally by the investigator. Suggested starting dilutions are as follows:

WB: 1:500~1:3000 IHC: 1:50~1:100

ELISA: 1:1000

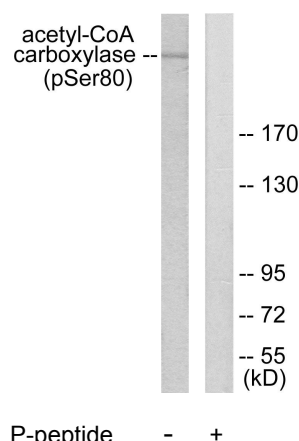
Storage Buffer

Rabbit IgG in phosphate buffered saline (without Mg²⁺ and Ca²⁺), pH 7.4, 150mM NaCl, 0.02% sodium azide and 50% glycerol.

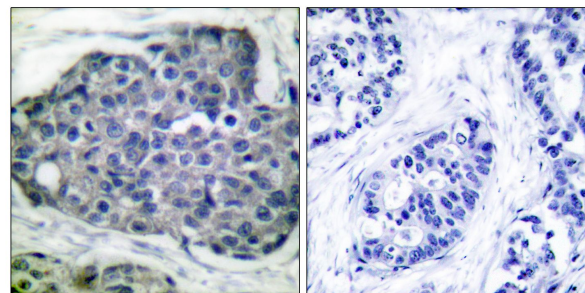
Storage Instructions

Stable for 1 year at -20°C from date of shipment. For maximum recovery of product, centrifuge the original vial after thawing and prior to removing the cap. Aliquot to avoid repeated freezing and thawing. Aliquot will be stable at 4°C for 3 months.

Images



Western blot analysis of extracts from 293 cells treated with EGF (200ng/ml, 5mins), using Acetyl-CoA Carboxylase (phospho-Ser80) antibody.



P-peptide - +

Immunohistochemical analysis of paraffin-embedded human breast carcinoma tissue, using Acetyl-CoA Carboxylase (phospho-Ser80) antibody.