

Anti- p130 Cas (Phospho-Tyr410) Polyclonal Antibody



| Catalog No. | Size |
|-------------|--------|
| A100034-01 | 50 µl |
| A100034-02 | 100 µl |

| | |
|--------------------|---|
| Specificity | Anti- p130 Cas (Phospho-Tyr410) (Human Mouse Rat) |
| Source | Rabbit Polyclonal |
| Application | WB ELISA IHC |
| Form | Liquid, 1 mg/ml |

Specificity and Sensitivity

Swiss-Prot No.: P56945

Other Names: BCAR1, Breast cancer anti-estrogen resistance 1, CRK-ASSOCIATED SUBSTRATE, CRKAS

Specificity and Sensitivity

p130 Cas (Phospho-Tyr410) antibody detects endogenous levels of p130 Cas only when phosphorylated at tyrosine 410.

Source and Purification

The antiserum was produced against synthesized phosphopeptide derived from human p130 Cas around the phosphorylation site of tyrosine 410 (G-V-Y^P-A-V).

The antibody was affinity-purified from rabbit antiserum by affinity-chromatography using epitope-specific immunogen.

Application Notes

Optimal working dilutions should be determined experimentally by the investigator. Suggested starting dilutions are as follows:

WB: 1:500~3000 IHC: 1:50~1:100

ELISA: 1:5000

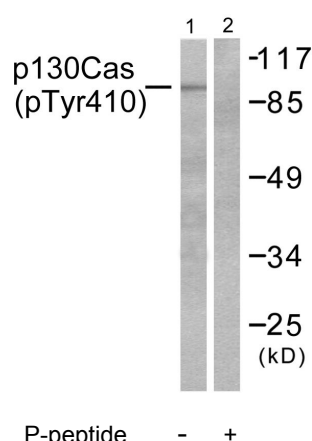
Storage Buffer

Rabbit IgG in phosphate buffered saline (without Mg²⁺ and Ca²⁺), pH 7.4, 150mM NaCl, 0.02% sodium azide and 50% glycerol.

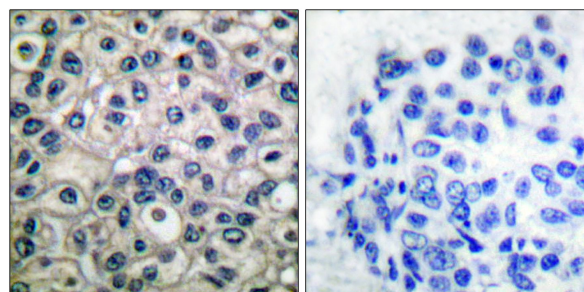
Storage Instructions

Stable for 1 year at -20°C from date of shipment. For maximum recovery of product, centrifuge the original vial after thawing and prior to removing the cap. Aliquot to avoid repeated freezing and thawing. Aliquot will be stable at 4°C for 3 months.

Images



Western blot analysis of extracts from NIH/3T3 cells, using p130 Cas (Phospho-Tyr410) antibody.



Immunohistochemical analysis of paraffin-embedded human breast carcinoma tissue, using p130 Cas (Phospho-Tyr410) antibody.