

Anti- FANCD2 (Phospho-Ser222) Polyclonal Antibody



Catalog No.	Size
A100051-01	50 µl
A100051-02	100 µl

Specificity	Anti-FANCD2 (Phospho-Ser222) (Human)
Source	Rabbit Polyclonal
Application	WB ELISA IHC
Form	Liquid, 1 mg/ml

Specificity and Sensitivity

Swiss-Prot No.: Q9BXW9

Other Names: FACD2, FANCD2, Fanconi anemia complementation group D2 protein

Specificity and Sensitivity

FANCD2 (Phospho-Ser222) antibody detects endogenous levels of FANCD2 only when phosphorylated at serine 222.

Source and Purification

The antiserum was produced against synthesized phosphopeptide derived from human FANCD2 around the phosphorylation site of serine 222 (G-D-S^P-Q-H).

The antibody was affinity-purified from rabbit antiserum by affinity-chromatography using epitope-specific immunogen.

Application Notes

Optimal working dilutions should be determined experimentally by the investigator. Suggested starting dilutions are as follows:

WB: 1:500~1:3000 IHC: 1:50~1:100

ELISA: 1:1000

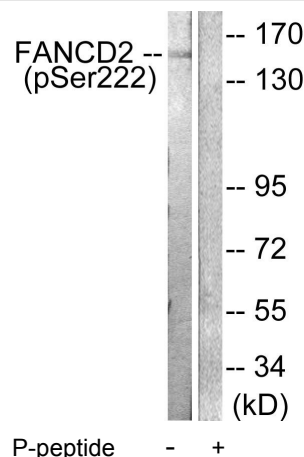
Storage Buffer

Rabbit IgG in phosphate buffered saline (without Mg²⁺ and Ca²⁺), pH 7.4, 150mM NaCl, 0.02% sodium azide and 50% glycerol.

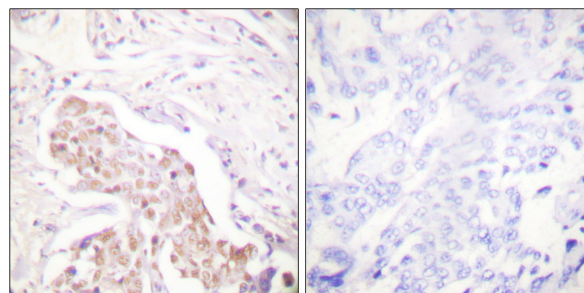
Storage Instructions

Stable for 1 year at -20°C from date of shipment. For maximum recovery of product, centrifuge the original vial after thawing and prior to removing the cap. Aliquot to avoid repeated freezing and thawing. Aliquot will be stable at 4°C for 3 months.

Images



Western blot analysis of extracts from HT-29 cells, treated with Calyculin A (50ng/ml, 30mins), using FANCD2 (Phospho-Ser222) antibody.



P-peptide - +

Immunohistochemical analysis of paraffin-embedded human lung carcinoma tissue using FANCD2 (Phospho-Ser222) antibody.