

Anti- Fyn (Phospho-Tyr530) Polyclonal Antibody



Catalog No.	Size
A100052-01	50 µl
A100052-02	100 µl

Specificity	Anti- Fyn (Phospho-Tyr530) (Human Mouse)
Source	Rabbit Polyclonal
Application	WB ELISA IHC
Form	Liquid, 1 mg/ml

Specificity and Sensitivity

Swiss-Prot No.: P06241

Other Names: c-syn protooncogene; FYN; FYN oncogene related to SRC, FGR, YES; MGC45350; OKT3-induced calcium influx regulator; p59-Fyn; protein-tyrosine kinase fyn; Proto-oncogene c-Fyn; Proto-oncogene Syn; proto-oncogene tyrosine-protein kinase fyn; SLK; src-like kinase; src/yes-related novel; SYN; tyrosine kinase p59fyn(T); Tyrosine-protein kinase Fyn

Specificity and Sensitivity

Fyn (Phospho-Tyr530) antibody detects endogenous levels of Fyn only when phosphorylated at tyrosine 530.

Source and Purification

The antiserum was produced against synthesized phosphopeptide derived from human Fyn around the phosphorylation site of tyrosine 530 (P-Q-Y^P-Q-P). The antibody was affinity-purified from rabbit antiserum by affinity-chromatography using epitope-specific immunogen.

Application Notes

Optimal working dilutions should be determined experimentally by the investigator. Suggested starting dilutions are as follows:

WB: 1:500~1:3000 IHC: 1:50~1:100

ELISA: 1:1000

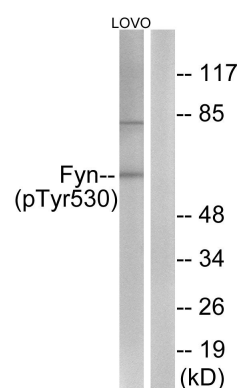
Storage Buffer

Rabbit IgG in phosphate buffered saline (without Mg²⁺ and Ca²⁺), pH 7.4, 150mM NaCl, 0.02% sodium azide and 50% glycerol.

Storage Instructions

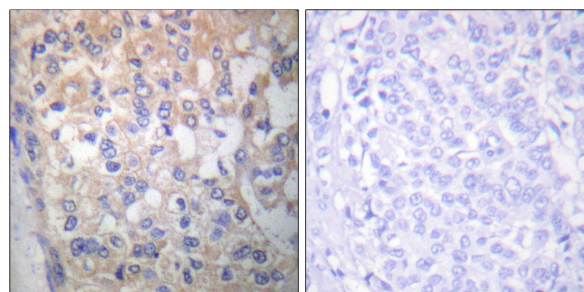
Stable for 1 year at -20°C from date of shipment. For maximum recovery of product, centrifuge the original vial after thawing and prior to removing the cap. Aliquot to avoid repeated freezing and thawing. Aliquot will be stable at 4°C for 3 months.

Images



P-peptide - +

Western blot analysis of extracts from LOVO cells, using Fyn (Phospho-Tyr530) antibody.



P-peptide - +

Immunohistochemical analysis of paraffin-embedded human breast carcinoma tissue, using Fyn (Phospho-Tyr530) antibody.