

Anti- GR (Phospho-Ser226) Polyclonal Antibody



Catalog No.	Size
A100053-01	50 µl
A100053-02	100 µl

Specificity	Anti-GR (Phospho-Ser226) (Human Mouse Rat)
Source	Rabbit Polyclonal
Application	WB ELISA IHC
Form	Liquid, 1 mg/ml

Specificity and Sensitivity

Swiss-Prot No.: P04150

Other Names: GCR, GRL, GRL1, NR3C1, glucocorticoid receptor

Specificity and Sensitivity

GR (Phospho-Ser226) antibody detects endogenous levels of GR only when phosphorylated at serine 226.

Source and Purification

The antiserum was produced against synthesized phosphopeptide derived from human GR around the phosphorylation site of serine 226 (L-L-S^P-P-L).

The antibody was affinity-purified from rabbit antiserum by affinity-chromatography using epitope-specific immunogen.

Application Notes

Optimal working dilutions should be determined experimentally by the investigator. Suggested starting dilutions are as follows:

WB: 1:500~1:3000 IHC: 1:50~1:100

ELISA: 1:5000

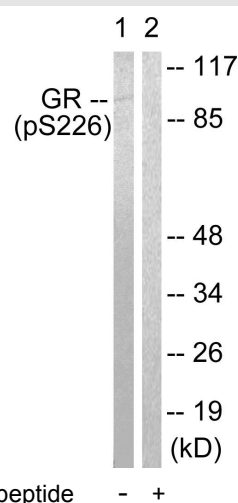
Storage Buffer

Rabbit IgG in phosphate buffered saline (without Mg²⁺ and Ca²⁺), pH 7.4, 150mM NaCl, 0.02% sodium azide and 50% glycerol.

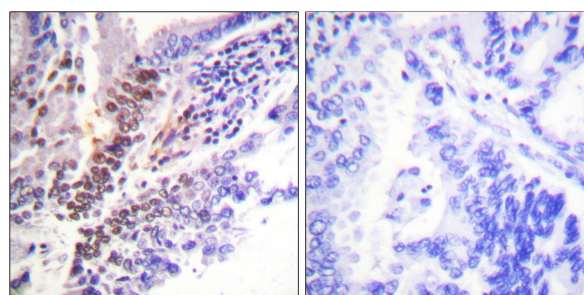
Storage Instructions

Stable for 1 year at -20°C from date of shipment. For maximum recovery of product, centrifuge the original vial after thawing and prior to removing the cap. Aliquot to avoid repeated freezing and thawing. Aliquot will be stable at 4°C for 3 months.

Images



Western blot analysis of extracts from Jurkat cells, treated with EGF (200ng/ml, 15mins), using GR (Phospho-Ser226) antibody.



Immunohistochemical analysis of paraffin-embedded human lung carcinoma tissue using GR (Phospho-Ser226) antibody.