

Anti- Histone H3 (Phospho-Thr3) Polyclonal Antibody



Catalog No.	Size
A100054-01	50 µl
A100054-02	100 µl

Specificity	Anti-Histone H3 (Phospho-Thr3) (Human Mouse Rat)
Source	Rabbit Polyclonal
Application	WB ELISA IHC
Form	Liquid, 1 mg/ml

Specificity and Sensitivity

Swiss-Prot No.: P68431

Other Names: H3/a, H3/c, H3/d, H3/f, H3/h, H3/i, H3/j, H3/k, H3/l, HIST1H3A, histone H3.1

Specificity and Sensitivity

Histone H3 (Phospho-Thr3) antibody detects endogenous levels of Histone H3 only when phosphorylated at threonine 3.

Source and Purification

The antiserum was produced against synthesized phosphopeptide derived from human Histone H3 around the phosphorylation site of threonine 3 (A-R-T^P-K-Q).

The antibody was affinity-purified from rabbit antiserum by affinity-chromatography using epitope-specific immunogen.

Application Notes

Optimal working dilutions should be determined experimentally by the investigator. Suggested starting dilutions are as follows:

WB: 1:500~1:3000 IHC: 1:50~1:100

ELISA: 1:1000

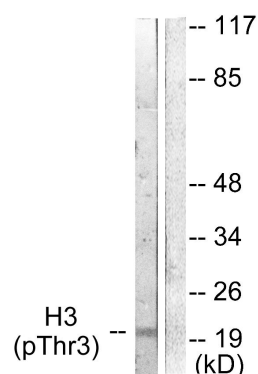
Storage Buffer

Rabbit IgG in phosphate buffered saline (without Mg²⁺ and Ca²⁺), pH 7.4, 150mM NaCl, 0.02% sodium azide and 50% glycerol.

Storage Instructions

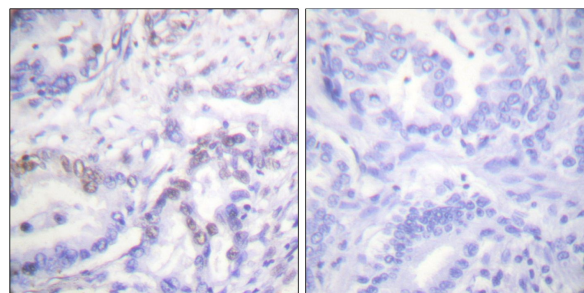
Stable for 1 year at -20°C from date of shipment. For maximum recovery of product, centrifuge the original vial after thawing and prior to removing the cap. Aliquot to avoid repeated freezing and thawing. Aliquot will be stable at 4°C for 3 months.

Images



P-peptide - +

Western blot analysis of extracts from HuvEc cells, treated with Serum (20%, 30mins), using Histone H3 (Phospho-Thr3) antibody.



P-peptide - +

Immunohistochemical analysis of paraffin-embedded human lung carcinoma tissue using Histone H3 (Phospho-Thr3) antibody.