

# Anti- ETS1 (Phospho-Thr38) Polyclonal Antibody



Catalog No.	Size
A100066-01	50 µl
A100066-02	100 µl

Specificity	Anti-ETS1 (Phospho-Thr38) (Human Mouse)
Source	Rabbit Polyclonal
Application	WB ELISA IHC IF
Form	Liquid, 1 mg/ml

## Specificity and Sensitivity

Swiss-Prot No.: P27577

Other Names: C-ets-1 protein, ETS-1, ETS1, p54

All Sites: Human: Thr38; Mouse: Thr38

## Specificity and Sensitivity

ETS1 (Phospho-Thr38) antibody detects endogenous levels of ETS1 only when phosphorylated at threonine 38.

## Source and Purification

The antiserum was produced against synthesized phosphopeptide derived from human ETS1 around the phosphorylation site of threonine 38 (L-L-T<sup>P</sup>-P-S).

The antibody was affinity-purified from rabbit antiserum by affinity-chromatography using epitope-specific immunogen.

## Application Notes

Optimal working dilutions should be determined experimentally by the investigator. Suggested starting dilutions are as follows:

WB: 1:500~1:3000 IHC: 1:50~1:100

IF: 1:100~1:500 ELISA: 1:10000

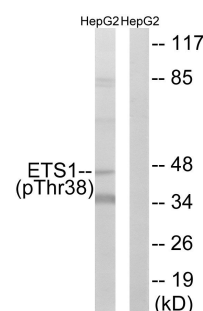
## Storage Buffer

Rabbit IgG in phosphate buffered saline (without Mg<sup>2+</sup> and Ca<sup>2+</sup>), pH 7.4, 150mM NaCl, 0.02% sodium azide and 50% glycerol.

## Storage Instructions

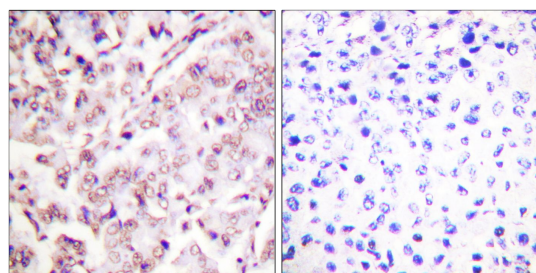
Stable for 1 year at -20°C from date of shipment. For maximum recovery of product, centrifuge the original vial after thawing and prior to removing the cap. Aliquot to avoid repeated freezing and thawing. Aliquot will be stable at 4°C for 3 months.

## Images



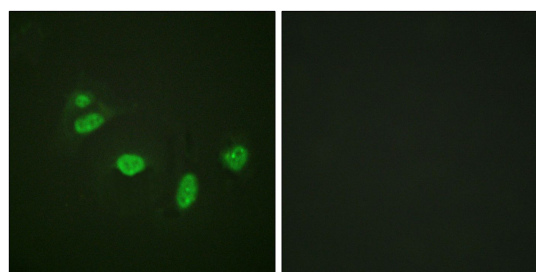
P-peptide - +

Western blot analysis of extracts from HepG2 cells, using ETS1 (Phospho-Thr38) antibody.



P-peptide - +

Immunohistochemistry analysis of paraffin-embedded human breast carcinoma tissue, using ETS1 (Phospho-Thr38) antibody.



P-peptide - +

Immunofluorescence analysis of HeLa cells, using ETS1 (Phospho-Thr38) antibody.