

Anti- FGFR1 (Phospho-Tyr766) Polyclonal Antibody



Catalog No.	Size
A100067-01	50 µl
A100067-02	100 µl

Specificity	Anti-FGFR1 (Phospho-Tyr766) (Human Mouse Rat)
Source	Rabbit Polyclonal
Application	WB ELISA
Form	Liquid, 1 mg/ml

Specificity and Sensitivity

Swiss-Prot No.: P11362

Other Names: EC 2.7.10.1, FGFR, FGFR-1, FGR1, FLG, FLT2, Fms-like tyrosine kinase-2, MFR, bFGF-R, c-fgr, kinase FGFR1

Specificity and Sensitivity

FGFR1 (Phospho-Tyr766) antibody detects endogenous levels of FGFR1 only when phosphorylated at tyrosine 766.

Source and Purification

The antiserum was produced against synthesized phosphopeptide derived from human FGFR1 around the phosphorylation site of tyrosine 766 (Q-E-Y^P-L-D). The antibody was affinity-purified from rabbit antiserum by affinity-chromatography using epitope-specific immunogen.

Application Notes

Optimal working dilutions should be determined experimentally by the investigator. Suggested starting dilutions are as follows:

WB: 1:500~1:3000 ELISA: 1:5000

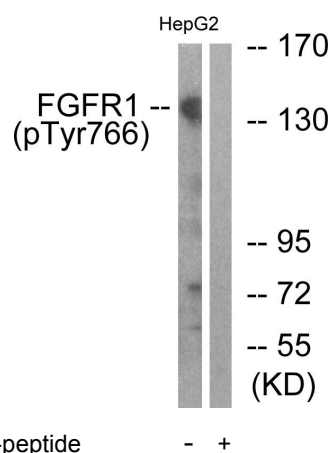
Storage Buffer

Rabbit IgG in phosphate buffered saline (without Mg²⁺ and Ca²⁺), pH 7.4, 150mM NaCl, 0.02% sodium azide and 50% glycerol.

Storage Instructions

Stable for 1 year at -20°C from date of shipment. For maximum recovery of product, centrifuge the original vial after thawing and prior to removing the cap. Aliquot to avoid repeated freezing and thawing. Aliquot will be stable at 4°C for 3 months.

Images



Western blot analysis of extracts from HepG2 cells, treated with EGF (200ng/ml, 30mins), using FGFR1(Phospho-Tyr766) antibody.