

Anti- Pim-1 (Phospho-Tyr309) Polyclonal Antibody



Catalog No.	Size
A100092-01	50 µl
A100092-02	100 µl

Specificity	Anti- Pim-1 (Phospho-Tyr309) (human mouse rat)
Source	Rabbit Polyclonal
Application	WB ELISA
Form	Liquid, 1 mg/ml

Product

Swiss-Prot No.: P06803

Other Names: EC 2.7.11.1, PIM-1, Proto-oncogene serine/threonine-protein kinase pim-1

Specificity and Sensitivity

Pim-1 (Phospho-Tyr309) antibody detects endogenous levels of Pim-1 only when phosphorylated at tyrosine 309.

Source and Purification

The antiserum was produced against synthesized phosphopeptide derived from human Pim-1 around the phosphorylation site of tyrosine 309 (H-R-Y^P-H-G).

The antibody was affinity-purified from rabbit antiserum by affinity-chromatography using epitope-specific immunogen.

Application Notes

Optimal working dilutions should be determined experimentally by the investigator. Suggested starting dilutions are as follows:

WB: 1:500~1:3000 ELISA: 1:40000

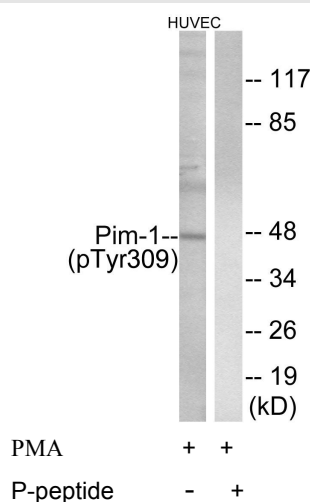
Storage Buffer

Rabbit IgG in phosphate buffered saline (without Mg²⁺ and Ca²⁺), pH 7.4, 150mM NaCl, 0.02% sodium azide and 50% glycerol.

Storage Instructions

Stable for 1 year at -20°C from date of shipment. For maximum recovery of product, centrifuge the original vial after thawing and prior to removing the cap. Aliquot to avoid repeated freezing and thawing. Aliquot will be stable at 4°C for 3 months.

Images



Western blot analysis of extracts from HUVEC cells, treated with PMA (125ng/ml, 30mins), using Pim-1 (Phospho-Tyr309) antibody.