

Anti- Ras-GRF1 (Phospho-Ser916) Polyclonal Antibody



<u>Catalog No.</u>	<u>Size</u>
A100094-01	50 µl
A100094-02	100 µl

Specificity	Anti- Ras-GRF1 (Phospho-Ser916) (mouse rat)
Source	Rabbit Polyclonal
Application	ELISA IHC
Form	Liquid, 1 mg/ml

Product

Swiss-Prot No.: Q13972

Other Names: CDC25, GNRP, GRF1, Guanine nucleotide releasing protein, P140 Ras-GRF, RASGRF1, Ras-specific nucleotide exchange factor CDC25

Specificity and Sensitivity

Ras-GRF1 (Phospho-Ser916) antibody detects endogenous levels of Ras-GRF1 only when phosphorylated at serine 916.

Source and Purification

The antiserum was produced against synthesized phosphopeptide derived from human Ras-GRF1 around the phosphorylation site of serine 916 (R-M-S^P-L-A).

The antibody was affinity-purified from rabbit antiserum by affinity-chromatography using epitope-specific immunogen.

Application Notes

Optimal working dilutions should be determined experimentally by the investigator. Suggested starting dilutions are as follows:

IHC: 1:50~1:100 ELISA: 1:20000

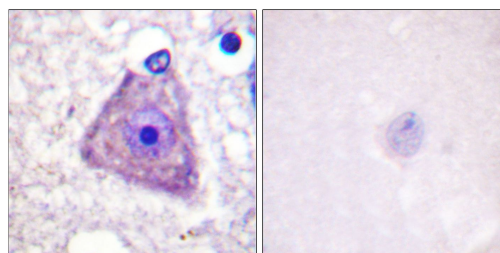
Storage Buffer

Rabbit IgG in phosphate buffered saline (without Mg²⁺ and Ca²⁺), pH 7.4, 150mM NaCl, 0.02% sodium azide and 50% glycerol.

Storage Instructions

Stable for 1 year at -20°C from date of shipment. For maximum recovery of product, centrifuge the original vial after thawing and prior to removing the cap. Aliquot to avoid repeated freezing and thawing. Aliquot will be stable at 4°C for 3 months.

Images



P-peptide - +

Immunohistochemistry analysis of paraffin-embedded human brain tissue using Ras-GRF1 (Phospho-Ser916) antibody.