

# Anti-Bloom Syndrome Protein (Phospho-Thr99) Polyclonal



## Antibody

Catalog No.	Size
A100099-01	50 µl
A100099-02	100 µl

<b>Specificity</b>	Anti- Bloom Syndrome Protein (Phospho-Thr99) (human)
<b>Source</b>	Rabbit Polyclonal
<b>Application</b>	WB ELISA IHC
<b>Form</b>	Liquid, 1 mg/ml

### Product

**Swiss-Prot No.:** P54132

**Other Names:** Bloom's syndrome protein, DNA helicase, RecQ-like, type 2, EC 3.6.1.-, RECQ2, RECQL3, RecQ protein-like 3

### Specificity and Sensitivity

Bloom Syndrome Protein (Phospho-Thr99) antibody detects endogenous levels of Bloom Syndrome Protein only when phosphorylated at threonine 99.

### Source and Purification

The antiserum was produced against synthesized phosphopeptide derived from human Bloom Syndrome Protein around the phosphorylation site of threonine 99 (Q-E-T<sup>P</sup>-Q-R).

The antibody was affinity-purified from rabbit antiserum by affinity-chromatography using epitope-specific immunogen.

### Application Notes

Optimal working dilutions should be determined experimentally by the investigator. Suggested starting dilutions are as follows:

WB: 1:500~1:3000    IHC: 1:50~1:100    ELISA: 1:40000

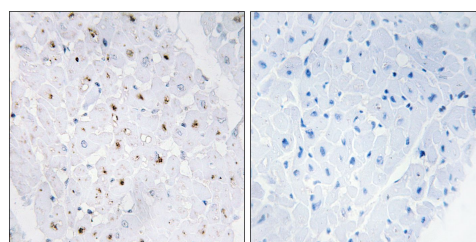
### Storage Buffer

Rabbit IgG in phosphate buffered saline (without Mg<sup>2+</sup> and Ca<sup>2+</sup>), pH 7.4, 150mM NaCl, 0.02% sodium azide and 50% glycerol.

### Storage Instructions

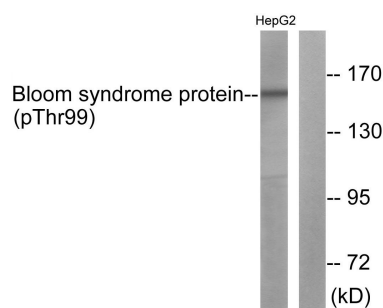
Stable for 1 year at -20°C from date of shipment. For maximum recovery of product, centrifuge the original vial after thawing and prior to removing the cap. Aliquot to avoid repeated freezing and thawing. Aliquot will be stable at 4°C for 3 months.

### Images



P-peptide                      -                      +

Immunohistochemistry analysis of paraffin-embedded human heart tissue, using Bloom Syndrome Protein (Phospho-Thr99) antibody.



P-peptide                      -                      +

Western blot analysis of extracts from HepG2 cells, using Bloom Syndrome Protein (Phospho-Thr99) antibody.