

Anti- CSFR (Phospho-Tyr809) Polyclonal Antibody



<u>Catalog No.</u>	<u>Size</u>
A100109-01	50 µl
A100109-02	100 µl

Specificity	Anti- CSFR (Phospho-Tyr809) (human)
Source	Rabbit Polyclonal
Application	ELISA IHC
Form	Liquid, 1 mg/ml

Product

Swiss-Prot No.: P07333

Other Names: CD115, CSF-1-R, CSF1R, CSFMR, EC 2.7.10.1, FMS, Fms proto-oncogene, M-CSFR, Macrophage colony stimulating factor I receptor precursor, c-fms, kinase CSFR

Specificity and Sensitivity

CSFR (Phospho-Tyr809) antibody detects endogenous levels of CSFR only when phosphorylated at tyrosine 809.

Source and Purification

The antiserum was produced against synthesized phosphopeptide derived from human CSFR around the phosphorylation site of tyrosine 809 (S-N-Y^P-I-V).

The antibody was affinity-purified from rabbit antiserum by affinity-chromatography using epitope-specific immunogen.

Application Notes

Optimal working dilutions should be determined experimentally by the investigator. Suggested starting dilutions are as follows:

IHC: 1:50~1:100 ELISA: 1:20000

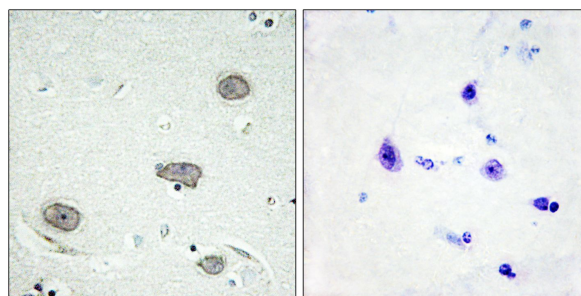
Storage Buffer

Rabbit IgG in phosphate buffered saline (without Mg²⁺ and Ca²⁺), pH 7.4, 150mM NaCl, 0.02% sodium azide and 50% glycerol.

Storage Instructions

Stable for 1 year at -20°C from date of shipment. For maximum recovery of product, centrifuge the original vial after thawing and prior to removing the cap. Aliquot to avoid repeated freezing and thawing. Aliquot will be stable at 4°C for 3 months.

Images



P-peptide - +
Immunohistochemistry analysis of paraffin-embedded human brain tissue using CSFR (Phospho-Tyr809) antibody.