

# Anti- Smad2 (Phospho-Thr220) Polyclonal Antibody



<u>Catalog No.</u>	<u>Size</u>
A100120-01	50 µl
A100120-02	100 µl

<b>Specificity</b>	Anti- Smad2 (Phospho-Thr220) (human mouse rat)
<b>Source</b>	Rabbit Polyclonal
<b>Application</b>	ELISA IF
<b>Form</b>	Liquid, 1 mg/ml

## Product

**Swiss-Prot No.:** Q15796

**Other Names:** JV18-1, MADH2, MADR2, Mad-related protein 2, Mothers against DPP homolog 2, Mothers against

## Specificity and Sensitivity

Smad2 (Phospho-Thr220) antibody detects endogenous levels of Smad2 only when phosphorylated at threonine 220.

## Source and Purification

The antiserum was produced against synthesized phosphopeptide derived from human Smad2 around the phosphorylation site of threonine 220 (P-E-T<sup>P</sup>-P-P).

The antibody was affinity-purified from rabbit antiserum by affinity-chromatography using epitope-specific immunogen.

## Application Notes

Optimal working dilutions should be determined experimentally by the investigator. Suggested starting dilutions are as follows:

IF: 1:100~1:500      ELISA: 1:1000

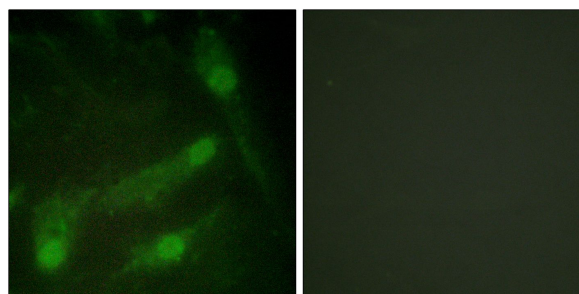
## Storage Buffer

Rabbit IgG in phosphate buffered saline (without Mg<sup>2+</sup> and Ca<sup>2+</sup>), pH 7.4, 150mM NaCl, 0.02% sodium azide and 50% glycerol.

## Storage Instructions

Stable for 1 year at -20°C from date of shipment. For maximum recovery of product, centrifuge the original vial after thawing and prior to removing the cap. Aliquot to avoid repeated freezing and thawing. Aliquot will be stable at 4°C for 3 months.

## Images



P-peptide      -      +  
Immunofluorescence analysis of HeLa cells, using Smad2 (Phospho-Thr220) antibody.