

Anti-PAK1/2 (Phospho-Ser199) Polyclonal Antibody



Catalog No.	Size
A100130-01	50 µl
A100130-02	100 µl

Specificity	Anti-PAK1/2 (Phospho-Ser199) (human mouse rat)
Source	Rabbit Polyclonal
Application	WB ELISA IHC
Form	Liquid, 1 mg/ml

Product

Swiss-Prot No.: Q13153

Other Names: ADRB2, Alpha-PAK, CDC42/RAC effector kinase PAK-A, EC 2.7.11.1, P65-PAK, P68-PAK, PAK 1, PAK-1, PAKA, Protein kinase MUK2, kinase PAK1, p21-activated kinase 1

Specificity and Sensitivity

PAK1/2 (Phospho-Ser199) antibody detects endogenous levels of PAK1/2 only when phosphorylated at serine 199.

Source and Purification

The antiserum was produced against synthesized phosphopeptide derived from human PAK1/2 around the phosphorylation site of serine 199 (T-K-S^P-V-Y). The antibody was affinity-purified from rabbit antiserum by affinity-chromatography using epitope-specific immunogen.

Application Notes

Optimal working dilutions should be determined experimentally by the investigator. Suggested starting dilutions are as follows:

WB: 1:500~1:3000 IHC: 1:50~1:100 ELISA: 1:1000

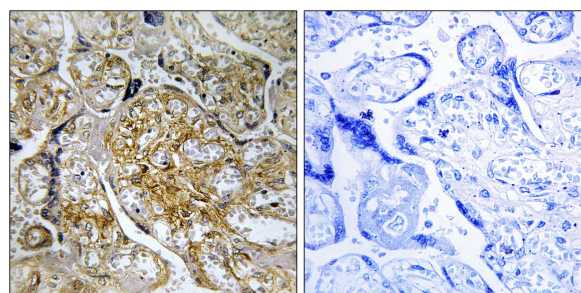
Storage Buffer

Rabbit IgG in phosphate buffered saline (without Mg²⁺ and Ca²⁺), pH 7.4, 150mM NaCl, 0.02% sodium azide and 50% glycerol.

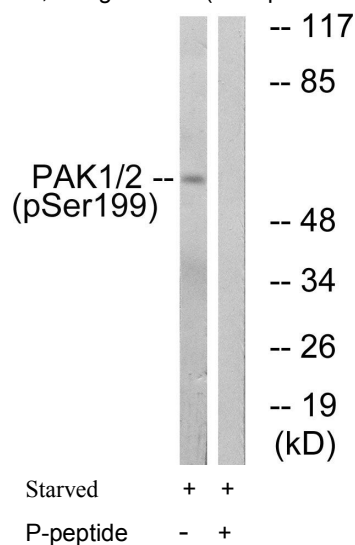
Storage Instructions

Stable for 1 year at -20°C from date of shipment. For maximum recovery of product, centrifuge the original vial after thawing and prior to removing the cap. Aliquot to avoid repeated freezing and thawing. Aliquot will be stable at 4°C for 3 months.

Images



P-peptide - +
Immunohistochemistry analysis of paraffin-embedded human placenta tissue, using PAK1/2 (Phospho-Ser199) antibody.



Western blot analysis of extracts from LOVO cells, treated with starved (24hours), using PAK1/2 (Phospho-Ser199) antibody.