

Anti- Glutamate receptor 2 (Phospho-Ser880)



Polyclonal Antibody

Catalog No.	Size
A100171-01	50 µl
A100171-02	100 µl

Specificity	Anti- Glutamate receptor 2 (Phospho-Ser880) (human mouse)
Source	Rabbit Polyclonal
Application	WB ELISA IHC
Form	Liquid, 1 mg/ml

Product

Swiss-Prot No.: P42262

Other Names: GRIA2, GluR-2, GluR-B, GluR-K2, Glutamate receptor 2 precursor, Glutamate receptor ionotropic, AMPA 2

Specificity and Sensitivity

Glutamate receptor 2 (phospho-Ser880) antibody detects endogenous levels of Glutamate receptor 2 only when phosphorylated at serine 880.

Source and Purification

The antiserum was produced against synthesized phosphopeptide derived from human Glutamate receptor 2 around the phosphorylation site of serine 880 (I-E-SP-V-K). The antibody was affinity-purified from rabbit antiserum by affinity-chromatography using epitope-specific immunogen.

Application Notes

Optimal working dilutions should be determined experimentally by the investigator. Suggested starting dilutions are as follows:

WB: 1:500~1:3000 IHC: 1:50~1:100 ELISA: 1:20000

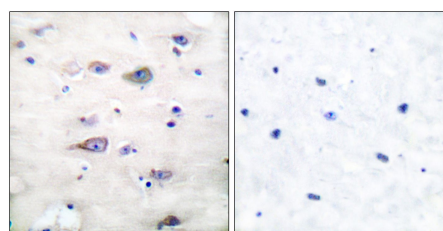
Storage Buffer

Rabbit IgG in phosphate buffered saline (without Mg^{2+} and Ca^{2+}), pH 7.4, 150mM NaCl, 0.02% sodium azide and 50% glycerol.

Storage Instructions

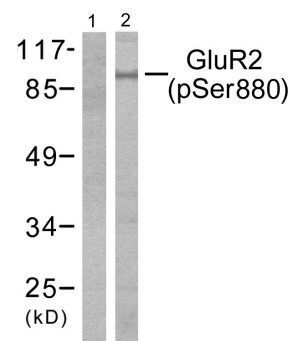
Stable for 1 year at -20°C from date of shipment. For maximum recovery of product, centrifuge the original vial after thawing and prior to removing the cap. Aliquot to avoid repeated freezing and thawing. Aliquot will be stable at 4°C for 3 months.

Images



P-peptide - +

Immunohistochemical analysis of paraffin-embedded human brain tissue using Glutamate receptor 2 (phospho-Ser880) antibody.



P-peptide - +

Western blot analysis of extracts from mouse brain, using Glutamate receptor 2 (phospho-Ser880) antibody.