

# Anti- IRS-1 (Phospho-Ser312) Polyclonal Antibody



Catalog No.	Size
A100176-01	50 µl
A100176-02	100 µl

<b>Specificity</b>	Anti- IRS-1 (Phospho-Ser312) (human mouse rat)
<b>Source</b>	Rabbit Polyclonal
<b>Application</b>	WB ELISA IF
<b>Form</b>	Liquid, 1 mg/ml

## Product

**Swiss-Prot No.:** P35568

**Other Names:** Insulin receptor substrate-1; IRS-1; IRS1

## Specificity and Sensitivity

IRS-1 (Phospho-Ser312) antibody detects endogenous levels of IRS-1 only when phosphorylated at serine 312.

## Source and Purification

The antiserum was produced against synthesized phosphopeptide derived from human IRS-1 around the phosphorylation site of serine 312 (A-T-S<sup>P</sup>-P-A). The antibody was affinity-purified from rabbit antiserum by affinity-chromatography using epitope-specific immunogen.

## Application Notes

Optimal working dilutions should be determined experimentally by the investigator. Suggested starting dilutions are as follows:

WB: 1:500~1:3000 IF: 1:100~1:500 ELISA: 1:20000

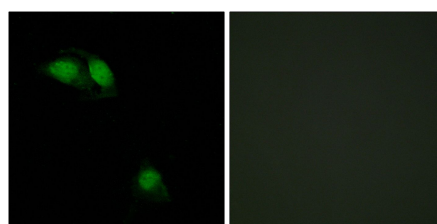
## Storage Buffer

Rabbit IgG in phosphate buffered saline (without Mg<sup>2+</sup> and Ca<sup>2+</sup>), pH 7.4, 150mM NaCl, 0.02% sodium azide and 50% glycerol.

## Storage Instructions

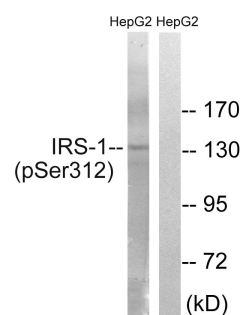
Stable for 1 year at -20°C from date of shipment. For maximum recovery of product, centrifuge the original vial after thawing and prior to removing the cap. Aliquot to avoid repeated freezing and thawing. Aliquot will be stable at 4°C for 3 months.

## Images



P-peptide - +

Immunofluorescence analysis of HeLa cells, using IRS-1 (Phospho-Ser312) antibody.



P-peptide - +

Western blot analysis of extracts from HepG2 cells, using IRS-1 (Phospho-Ser312) antibody.