

Anti- JunD (Phospho-Ser255) Polyclonal Antibody



Catalog No.	Size
A100180-01	50 µl
A100180-02	100 µl

Specificity	Anti- JunD (Phospho-Ser255) (human mouse rat)
Source	Rabbit Polyclonal
Application	WB ELISA IHC IP
Form	Liquid, 1 mg/ml

Product

Swiss-Prot No.: P17535

Specificity and Sensitivity

JunD (phospho-Ser255) antibody detects endogenous levels of JunD only when phosphorylated at serine 255.

Source and Purification

The antiserum was produced against synthesized phosphopeptide derived from human JunD around the phosphorylation site of serine 255 (G-E-SP-P-P).

The antibody was affinity-purified from rabbit antiserum by affinity-chromatography using epitope-specific immunogen.

Application Notes

Optimal working dilutions should be determined experimentally by the investigator. Suggested starting dilutions are as follows:

WB: 1:500~1:3000 IHC: 1:50~1:100
ELISA: 1:20000 IP: Various Dilution

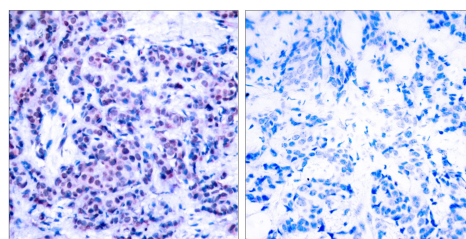
Storage Buffer

Rabbit IgG in phosphate buffered saline (without Mg²⁺ and Ca²⁺), pH 7.4, 150mM NaCl, 0.02% sodium azide and 50% glycerol.

Storage Instructions

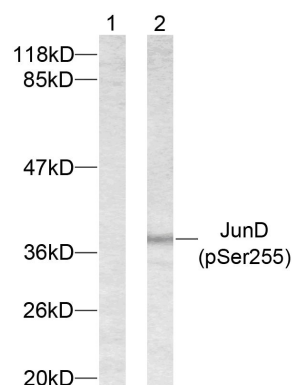
Stable for 1 year at -20°C from date of shipment. For maximum recovery of product, centrifuge the original vial after thawing and prior to removing the cap. Aliquot to avoid repeated freezing and thawing. Aliquot will be stable at 4°C for 3 months.

Images



P-peptide - +

Immunohistochemical analysis of paraffin-embedded human breast carcinoma tissue, using JunD (phospho-Ser255) antibody.



Forskolin + +
P-peptide - +

Western blot analysis of extracts from 293 cells using JunD (phospho-Ser255) antibody.