

Anti-NF- κ B p65 (Phospho-Ser281) Antibody



<u>Catalog No.</u>	<u>Size</u>
A100215-01	50 μ l
A100215-02	100 μ l

Specificity	Anti- NF- κ B p65 (Phospho-Ser281) (human mouse rat)
Source	Rabbit Polyclonal
Application	IHC ELISA
Form	Liquid, 1 mg/ml

Product

Swiss-Prot No.: Q04206

Other Names: NFKB3; nuclear factor NF-kappa-B p65 subunit; p65; RELA; TF65; transcription factor p65

Specificity and Sensitivity

NF- κ B p65 (Phospho-Ser281) antibody detects endogenous levels of NF- κ B p65 only when phosphorylated at serine 281.

Source and Purification

The antiserum was produced against synthesized phosphopeptide derived from human NF- κ B p65 around the phosphorylation site of serine 281 (E-L-SP-E-P).

The antibody was affinity-purified by affinity-chromatography using epitope-specific immunogen.

Application Notes

Optimal working dilutions should be determined experimentally by the investigator. Suggested starting dilutions are as follows:

IHC 1:50-1:100 ELISA 1:1000

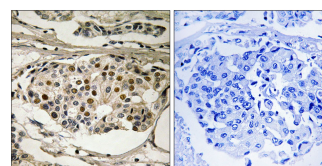
Storage Buffer

Rabbit IgG in phosphate buffered saline (without Mg²⁺ and Ca²⁺), pH 7.4, 150mM NaCl, 0.02% sodium azide and 50% glycerol.

Storage Instructions

Stable for 1 year at -20°C from date of shipment. For maximum recovery of product, centrifuge the original vial after thawing and prior to removing the cap. Aliquot to avoid repeated freezing and thawing. Aliquot will be stable at 4°C for 3 months.

Images



P-peptide

-

+

Immunohistochemistry analysis of paraffin-embedded human breast carcinoma tissue, using NF- κ B p65 (Phospho-Ser281) antibody.

Related Products

PW001: Super ECL Assay kit

E030120 : HRP, Goat Anti-Rabbit IgG(H+L)

E030220 : AP, Goat Anti-Rabbit IgG(H+L)

E021010: Anti-GAPDH Mouse Monoclonal Antibody

E021020: Anti-beta Actin Mouse Monoclonal Antibody

E022330: Anti-His Tag Mouse Monoclonal Antibody-HRP