

Anti-SRF (Phospho-Ser77) Antibody



<u>Catalog No.</u>	<u>Size</u>
A100221-01	50 µl
A100221-02	100 µl

Specificity	Anti- SRF (Phospho-Ser77) (human mouse)
Source	Rabbit Polyclonal
Application	WB IHC ELISA
Form	Liquid, 1 mg/ml

Product

Swiss-Prot No.: P11831

Other Names: serum response factor

Specificity and Sensitivity

SRF (Phospho-Ser77) antibody detects endogenous levels of SRF only when phosphorylated at serine 77.

Source and Purification

The antiserum was produced against synthesized phosphopeptide derived from human SRF around the phosphorylation site of serine 77 (L-Y-SP-G-S).

The antibody was affinity-purified by affinity-chromatography using epitope-specific immunogen.

Application Notes

Optimal working dilutions should be determined experimentally by the investigator. Suggested starting dilutions are as follows:

WB 1:500~1:1000 IHC 1:50~1:100 ELISA 1:40000

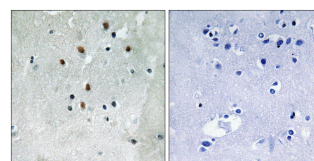
Storage Buffer

Rabbit IgG in phosphate buffered saline (without Mg^{2+} and Ca^{2+}), pH 7.4, 150mM NaCl, 0.02% sodium azide and 50% glycerol.

Storage Instructions

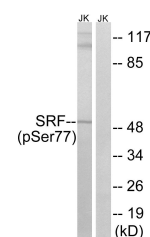
Stable for 1 year at -20°C from date of shipment. For maximum recovery of product, centrifuge the original vial after thawing and prior to removing the cap. Aliquot to avoid repeated freezing and thawing. Aliquot will be stable at 4°C for 3 months.

Images



P-peptide - +

Immunohistochemistry analysis of paraffin-embedded human brain tissue using SRF (Phospho-Ser77) antibody.



PMA + +

P-peptide - +

Western blot analysis of extracts from Jurkat cells, treated with PMA (125ng/ml, 30mins), using SRF (Phospho-Ser77) antibody.

Related Products

PW001: Super ECL Assay kit

E030120 : HRP, Goat Anti-Rabbit IgG(H+L)

E030220 : AP, Goat Anti-Rabbit IgG(H+L)

E021010: Anti-GAPDH Mouse Monoclonal Antibody

E021020: Anti-beta Actin Mouse Monoclonal Antibody

E022330: Anti-His Tag Mouse Monoclonal Antibody-HRP

