

# Anti-STMN1 (Phospho-Ser62) Antibody



Catalog No.	Size
A100222-01	50 µl
A100222-02	100 µl

Specificity	Anti- STMN1 (Phospho-Ser62) (human mouse rat)
Source	Rabbit Polyclonal
Application	WB IHC ELISA
Form	Liquid, 1 mg/ml

## Product

**Swiss-Prot No.:** P16949

**Other Names:** LAG; LAP18; Leukemia-associated gene protein; Leukemia-associated phosphoprotein p18; Metablastin; Oncoprotein 18; Op18; Phosphoprotein p19; pp17; pp19; PR22; Pr22 protein; Prosofin; stathmin; STN1

## Specificity and Sensitivity

STMN1 (Phospho-Ser62) antibody detects endogenous levels of STMN1 only when phosphorylated at serine 62.

## Source and Purification

The antiserum was produced against synthesized phosphopeptide derived from human STMN1 around the phosphorylation site of serine 62 (R-K-SP-H-E). The antibody was affinity-purified by affinity-chromatography using epitope-specific immunogen.

## Application Notes

Optimal working dilutions should be determined experimentally by the investigator. Suggested starting dilutions are as follows:  
WB 1:500~1:3000 IHC 1:50~1:100 ELISA 1:40000

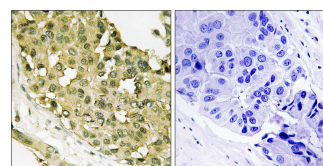
## Storage Buffer

Rabbit IgG in phosphate buffered saline (without  $Mg^{2+}$  and  $Ca^{2+}$ ), pH 7.4, 150mM NaCl, 0.02% sodium azide and 50% glycerol.

## Storage Instructions

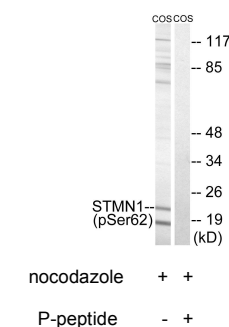
Stable for 1 year at -20°C from date of shipment. For maximum recovery of product, centrifuge the original vial after thawing and prior to removing the cap. Aliquot to avoid repeated freezing and thawing. Aliquot will be stable at 4°C for 3 months.

## Images



P-peptide - +

Immunohistochemistry analysis of paraffin-embedded human breast carcinoma tissue, using STMN1 (Phospho-Ser62) antibody.



Western blot analysis of extracts from COS cells, treated with nocodazole (1ug/ml, 16hours), using STMN1 (Phospho-Ser62) antibody.

## Related Products

PW001: Super ECL Assay kit  
E030120 : HRP, Goat Anti-Rabbit IgG(H+L)  
E030220 : AP, Goat Anti-Rabbit IgG(H+L)  
E021010: Anti-GAPDH Mouse Monoclonal Antibody  
E021020: Anti-beta Actin Mouse Monoclonal Antibody  
E022330: Anti-His Tag Mouse Monoclonal Antibody-HRP

