

Anti-INSR (Phospho-Thr1375) Antibody



Catalog No.	Size
A100244-01	50 µl
A100244-02	100 µl

Specificity	Anti- INSR (Phospho-Thr1375) (human mouse rat)
Source	Rabbit Polyclonal
Application	WB ELISA
Form	Liquid, 1 mg/ml

Product

Swiss-Prot No.: P06213

Other Names: CD220 antigen; EC 2.7.10.1; insulin receptor; IR; kinase InsR

Specificity and Sensitivity

INSR (Phospho-Thr1375) antibody detects endogenous levels of INSR only when phosphorylated at threonine 1375.

Source and Purification

The antiserum was produced against synthesized phosphopeptide derived from human INSR around the phosphorylation site of threonine 1375 (I-L-TP-L-P).

The antibody was affinity-purified by affinity-chromatography using epitope-specific immunogen.

Application Notes

Optimal working dilutions should be determined experimentally by the investigator. Suggested starting dilutions are as follows:

WB 1:500~1:1000 ELISA 1:5000

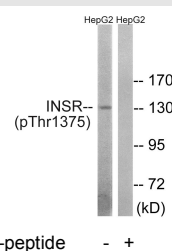
Storage Buffer

Rabbit IgG in phosphate buffered saline (without Mg^{2+} and Ca^{2+}), pH 7.4, 150mM NaCl, 0.02% sodium azide and 50% glycerol.

Storage Instructions

Stable for 1 year at -20°C from date of shipment. For maximum recovery of product, centrifuge the original vial after thawing and prior to removing the cap. Aliquot to avoid repeated freezing and thawing. Aliquot will be stable at 4°C for 3 months.

Images



Western blot analysis of extracts from HepG2 cells, using INSR (Phospho-Thr1375) antibody.

Related Products

PW001: Super ECL Assay kit

E030120 : HRP, Goat Anti-Rabbit IgG(H+L)

E030220 : AP, Goat Anti-Rabbit IgG(H+L)

E021010: Anti-GAPDH Mouse Monoclonal Antibody

E021020: Anti-beta Actin Mouse Monoclonal Antibody

E022330: Anti-His Tag Mouse Monoclonal Antibody-HRP