

# Anti- MAP2K1 (Phospho-Thr386) Polyclonal Antibody



Catalog No.	Size
A100253-01	50 µl
A100253-02	100 µl

Specificity	Anti- MAP2K1 (Phospho-Thr386) (human mouse rat)
Source	Rabbit Polyclonal
Application	WB ELISA
Form	Liquid, 1 mg/ml

## Product

**Swiss-Prot No.:** Q02750

**Other Names:** Dual specificity mitogen-activated protein kinase kinase 1; ERK activator kinase 1; MAP kinase kinase 1; MAP2K1; MAPK/ERK kinase 1; MAPKK 1; MAPKK1; MEK1; MP2K1; PRKMK1; kinase MEK1

## Specificity and Sensitivity

MAP2K1 (Phospho-Thr386) antibody detects endogenous levels of MAP2K1 only when phosphorylated at threonine 386.

## Source and Purification

The antiserum was produced against synthesized phosphopeptide derived from human MAP2K1 around the phosphorylation site of threonine 386 (P-S-T<sup>P</sup>-P-T). The antibody was affinity-purified from rabbit antiserum by affinity-chromatography using epitope-specific immunogen.

## Application Notes

Optimal working dilutions should be determined experimentally by the investigator. Suggested starting dilutions are as follows:

WB: 1:500~1:3000      ELISA: 1:10000

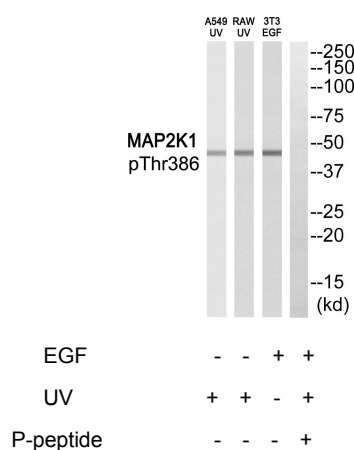
## Storage Buffer

Rabbit IgG in phosphate buffered saline (without Mg<sup>2+</sup> and Ca<sup>2+</sup>), pH 7.4, 150mM NaCl, 0.02% sodium azide and 50% glycerol.

## Storage Instructions

Stable for 1 year at -20°C from date of shipment. For maximum recovery of product, centrifuge the original vial after thawing and prior to removing the cap. Aliquot to avoid repeated freezing and thawing. Aliquot will be stable at 4°C for 3 months.

## Images



Western blot analysis of extracts from A549 cells and RAW264.7 cells treated with UV, and NIH/3T3 cells treated with EGF, using MAP2K1 (Phospho-Thr386) antibody. r400) antibody.