

Anti- MAP2K7 (Phospho-Ser271) Polyclonal Antibody



Catalog No.	Size
A100256-01	50 µl
A100256-02	100 µl

Specificity	Anti- MAP2K7 (Phospho-Ser271) (human mouse rat)
Source	Rabbit Polyclonal
Application	WB ELISA IHC
Form	Liquid, 1 mg/ml

Product

Swiss-Prot No.: O14733

Other Names: c-Jun N-terminal kinase kinase 2; Dual specificity mitogen-activated protein kinase kinase 7; EC 2.7.12.2; JNK activating kinase 2; JNK kinase 2; JNKK 2; JNKK2; kinase MKK7; MAP kinase kinase 7; MAP2K7; MAPK/ERK kinase 7; MAPKK 7; MP2K7; PRKMK7

Specificity and Sensitivity

MAP2K7 (Phospho-Ser271) antibody detects endogenous levels of MAP2K7 only when phosphorylated at serine 271.

Source and Purification

The antiserum was produced against synthesized phosphopeptide derived from human MAP2K7 around the phosphorylation site of serine 271 (V-D-S^P-K-A). The antibody was affinity-purified from rabbit antiserum by affinity-chromatography using epitope-specific immunogen.

Application Notes

Optimal working dilutions should be determined experimentally by the investigator. Suggested starting dilutions are as follows:

WB: 1:500~1:3000 IHC: 1:50~1:100 ELISA: 1:20000

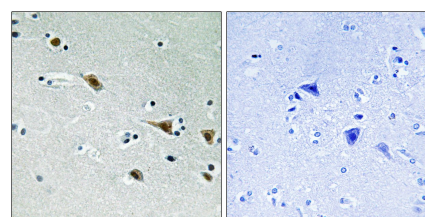
Storage Buffer

Rabbit IgG in phosphate buffered saline (without Mg²⁺ and Ca²⁺), pH 7.4, 150mM NaCl, 0.02% sodium azide and 50% glycerol.

Storage Instructions

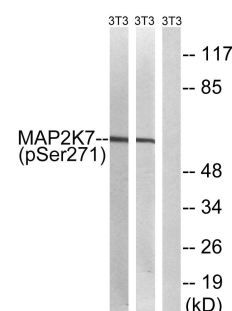
Stable for 1 year at -20°C from date of shipment. For maximum recovery of product, centrifuge the original vial after thawing and prior to removing the cap. Aliquot to avoid repeated freezing and thawing. Aliquot will be stable at 4°C for 3 months.

Images



P-peptide - +

Immunohistochemistry analysis of paraffin-embedded human brain tissue, using MAP2K7 (Phospho-Ser271) antibody.



Insulin	+	-	+
EGF	-	+	-
P-peptide	-	-	+

Western blot analysis of extracts from 3T3 cells treated with insulin (0.01U/ml, 15mins) and 3T3 cells treated with EGF (200ng/ml, 30mins), using MAP2K7 (Phospho-Ser271) antibody.