

Anti- PLK1 (Phospho-Ser137) Polyclonal Antibody



<u>Catalog No.</u>	<u>Size</u>
A100273-01	50 µl
A100273-02	100 µl

Specificity	Anti- PLK1 (Phospho-Ser137) (human mouse rat)
Source	Rabbit Polyclonal
Application	WB ELISA
Form	Liquid, 1 mg/ml

Product

Swiss-Prot No.: P53350

Other Names: Polo-like kinase 1; PLK-1;
Serine/threonine-protein kinase 13; STPK13

Specificity and Sensitivity

PLK1 (Phospho-Ser137) antibody detects endogenous levels of PLK1 only when phosphorylated at serine 137.

Source and Purification

The antiserum was produced against synthesized phosphopeptide derived from human PLK1 around the phosphorylation site of serine 137 (R-R-S^P-L-L).

The antibody was affinity-purified from rabbit antiserum by affinity-chromatography using epitope-specific immunogen.

Application Notes

Optimal working dilutions should be determined experimentally by the investigator. Suggested starting dilutions are as follows:

WB: 1:500~1:1000 ELISA: 1:40000

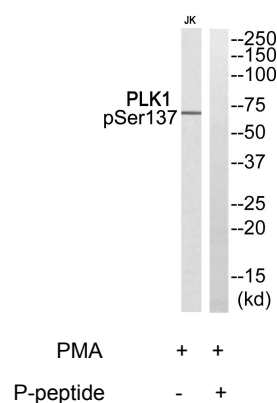
Storage Buffer

Rabbit IgG in phosphate buffered saline (without Mg²⁺ and Ca²⁺), pH 7.4, 150mM NaCl, 0.02% sodium azide and 50% glycerol.

Storage Instructions

Stable for 1 year at -20°C from date of shipment. For maximum recovery of product, centrifuge the original vial after thawing and prior to removing the cap. Aliquot to avoid repeated freezing and thawing. Aliquot will be stable at 4°C for 3 months.

Images



Western blot analysis of extracts from Jurkat cells treated with PMA, using PLK1 (Phospho-Ser137) antibody.