

Anti- RIPK2 (Phospho-Ser176) Polyclonal Antibody



Catalog No.	Size
A100276-01	50 µl
A100276-02	100 µl

Specificity	Anti- RIPK2 (Phospho-Ser176) (human mouse)
Source	Rabbit Polyclonal
Application	WB IHC ELISA
Form	Liquid, 1 mg/ml

Product

Swiss-Prot No.: O43353

Other Names: CARD-containing IL-1 beta ICE-kinase; CARD-containing interleukin-1 beta converting enzyme associated kinase; CARDIAK; EC 2.7.11.1; kinase RIPK2; Receptor-interacting protein 2; Receptor-interacting serine/threonine protein kinase 2; RICK; RIP-2; RIP-like interacting CLARP kinase; RIP2; RIPK2

Specificity and Sensitivity

RIPK2 (Phospho-Ser176) antibody detects endogenous levels of RIPK2 only when phosphorylated at serine 176.

Source and Purification

The antiserum was produced against synthesized phosphopeptide derived from human RIPK2 around the phosphorylation site of serine 176 (S-L-S^P-Q-S). The antibody was affinity-purified from rabbit antiserum by affinity-chromatography using epitope-specific immunogen.

Application Notes

Optimal working dilutions should be determined experimentally by the investigator. Suggested starting dilutions are as follows:
WB: 1:500~1:3000 IHC: 1:50~1:100 ELISA: 1:40000

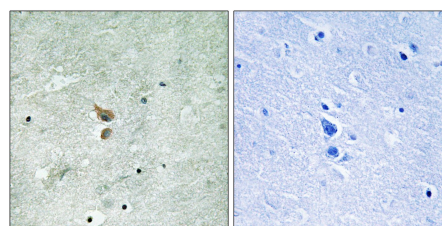
Storage Buffer

Rabbit IgG in phosphate buffered saline (without Mg²⁺ and Ca²⁺), pH 7.4, 150mM NaCl, 0.02% sodium azide and 50% glycerol.

Storage Instructions

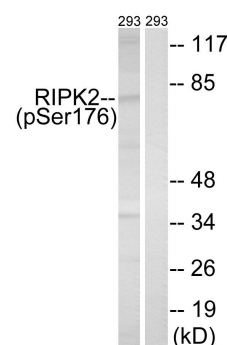
Stable for 1 year at -20°C from date of shipment. For maximum recovery of product, centrifuge the original vial after thawing and prior to removing the cap. Aliquot to avoid repeated freezing and thawing. Aliquot will be stable at 4°C for 3 months.

Images



P-peptide - +

Immunohistochemistry analysis of paraffin-embedded human brain tissue using RIPK2 (Phospho-Ser176) antibody.



UV + +
P-peptide - +

Western blot analysis of extracts from 293 cells, treated with UV (15mins), using RIPK2 (Phospho-Ser176) antibody.

