

Anti- RSK1/2/3/4 (Phospho-Ser221/227/218/232)



Polyclonal Antibody

Catalog No.	Size
A100277-01	50 µl
A100277-02	100 µl

Specificity	Anti- RSK1/2/3/4 (Phospho-Ser221/227/218/232) (human mouse)
Source	Rabbit Polyclonal
Application	WB ELISA
Form	Liquid, 1 mg/ml

Product

Swiss-Prot No.: Q15418/P51812/Q15349/Q9UK32

Other Names: 90 kDa ribosomal protein S6 kinase 1; EC 2.7.11.1; kinase p90RSK1; KS6A1; KS6AA; MAPKAP-K1a; p90-RSK 1; pp90RSK1; Ribosomal protein S6 kinase alpha 1; Ribosomal S6 kinase 1; RPS6KA1; RSK-1; RSK1; S6K-alpha 1

Specificity and Sensitivity

RSK1/2/3/4 (Phospho-Ser221/227/218/232) antibody detects endogenous levels of RSK1/2/3/4 only when phosphorylated at serine 221/227/218/232.

Source and Purification

The antiserum was produced against synthesized phosphopeptide derived from human RSK1/2/3/4 around the phosphorylation site of serine 221/227/218/232 (A-Y-S^P-F-C). The antibody was affinity-purified from rabbit antiserum by affinity-chromatography using epitope-specific immunogen.

Application Notes

Optimal working dilutions should be determined experimentally by the investigator. Suggested starting dilutions are as follows:

WB: 1:500~1:3000 ELISA: 1:40000

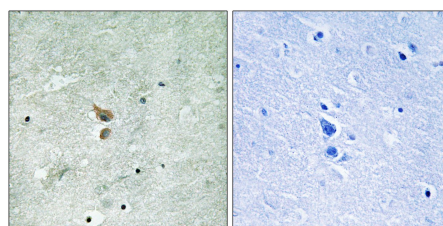
Storage Buffer

Rabbit IgG in phosphate buffered saline (without Mg²⁺ and Ca²⁺), pH 7.4, 150mM NaCl, 0.02% sodium azide and 50% glycerol.

Storage Instructions

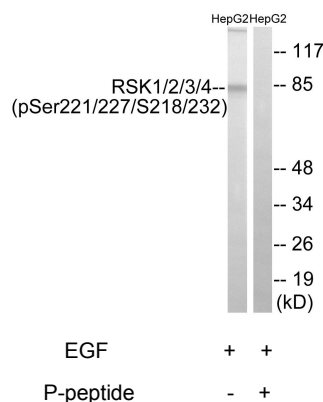
Stable for 1 year at -20°C from date of shipment. For maximum recovery of product, centrifuge the original vial after thawing and prior to removing the cap. Aliquot to avoid repeated freezing and thawing. Aliquot will be stable at 4°C for 3 months.

Images



P-peptide - +

Immunohistochemistry analysis of paraffin-embedded human brain tissue using RIPK2 (Phospho-Ser176) antibody.



Western blot analysis of extracts from HepG2 cells, treated with EGF (200ng/ml, 30mins), using RSK1/2/3/4 (Phospho-Ser221/227/218/232) antibody.