

# Anti- HP1 $\alpha$ (Phospho-Ser92) Polyclonal Antibody



Catalog No.	Size
A100312-01	50 $\mu$ l
A100312-02	100 $\mu$ l

Specificity	Anti- HP1 $\alpha$ (Phospho-Ser92) (human)
Source	Rabbit Polyclonal
Application	ELISA IHC
Form	Liquid, 1 mg/ml

## Product

**Swiss-Prot No.:** P45973

**Other Names:** antigen p25; chromobox protein homolog 5; heterochromatin protein 1 alpha; HP1 alpha; HP1A

## Specificity and Sensitivity

HP1 $\alpha$  (Phospho-Ser92) antibody detects endogenous levels of HP1 $\alpha$  only when phosphorylated at serine 92.

## Source and Purification

The antiserum was produced against synthesized phosphopeptide derived from human HP1 $\alpha$  around the phosphorylation site of serine 92 (R-K-S<sup>P</sup>-N-F).

The antibody was affinity-purified from rabbit antiserum by affinity-chromatography using epitope-specific immunogen.

## Application Notes

Optimal working dilutions should be determined experimentally by the investigator. Suggested starting dilutions are as follows:

IHC: 1:50~1:100      ELISA: 1:40000

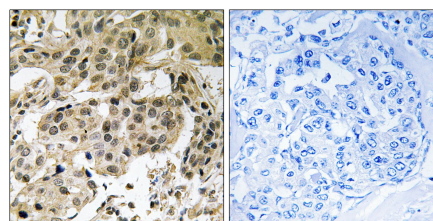
## Storage Buffer

Rabbit IgG in phosphate buffered saline (without Mg<sup>2+</sup> and Ca<sup>2+</sup>), pH 7.4, 150mM NaCl, 0.02% sodium azide and 50% glycerol.

## Storage Instructions

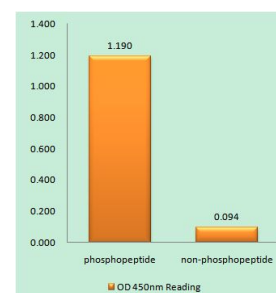
Stable for 1 year at -20°C from date of shipment. For maximum recovery of product, centrifuge the original vial after thawing and prior to removing the cap. Aliquot to avoid repeated freezing and thawing. Aliquot will be stable at 4°C for 3 months.

## Images



P-peptide      -      +

Immunohistochemistry analysis of paraffin-embedded human breast carcinoma tissue using HP1 $\alpha$  (Phospho-Ser92) antibody.



HP1 $\alpha$  (Phospho-Ser92) antibody reacts with epitope-specific phosphopeptide and corresponding non-phosphopeptide.

The absorbance readings at 450 nM are shown in the ELISA figure.