

Anti- WWOX (Phospho-Tyr33) Polyclonal Antibody



Catalog No.	Size
A100316-01	50 µl
A100316-02	100 µl

Specificity	Anti- WWOX (Phospho-Tyr33) (human mouse)
Source	Rabbit Polyclonal
Application	WB ELISA IHC
Form	Liquid, 1 mg/ml

Product

Swiss-Prot No.: Q96KM3

Other Names: Aberrant WW domain-containing oxidoreductase; EC 1.1.1.-; FOR; WOX1; WW domain-containing oxidoreductase

Specificity and Sensitivity

WWOX (Phospho-Tyr33) antibody detects endogenous levels of WWOX only when phosphorylated at tyrosine 33.

Source and Purification

The antiserum was produced against synthesized phosphopeptide derived from human WWOX around the phosphorylation site of tyrosine 33 (W-V-Y^P-Y-A). The antibody was affinity-purified from rabbit antiserum by affinity-chromatography using epitope-specific immunogen.

Application Notes

Optimal working dilutions should be determined experimentally by the investigator. Suggested starting dilutions are as follows:

WB: 1:500~1:3000 IHC: 1:50~1:100 ELISA: 1:10000

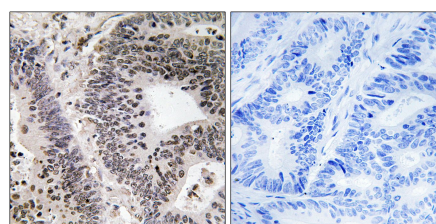
Storage Buffer

Rabbit IgG in phosphate buffered saline (without Mg²⁺ and Ca²⁺), pH 7.4, 150mM NaCl, 0.02% sodium azide and 50% glycerol.

Storage Instructions

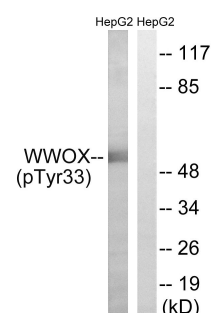
Stable for 1 year at -20°C from date of shipment. For maximum recovery of product, centrifuge the original vial after thawing and prior to removing the cap. Aliquot to avoid repeated freezing and thawing. Aliquot will be stable at 4°C for 3 months.

Images



P-peptide - +

Immunohistochemistry analysis of paraffin-embedded human colon carcinoma tissue using WWOX (Phospho-Tyr33) antibody.



PMA + +
P-peptide - +

Western blot analysis of extracts from HepG2 cells, treated with PMA (125ng/ml, 30mins), using WWOX (Phospho-Tyr33) antibody.