

# Anti- 4E-BP1 (Phospho-Thr70) Polyclonal Antibody



<u>Catalog No.</u>	<u>Size</u>
A100319-01	50 µl
A100319-02	100 µl

<b>Specificity</b>	Anti- 4E-BP1 (Phospho-Thr70) (human)
<b>Source</b>	Rabbit Polyclonal
<b>Application</b>	ELISA IHC
<b>Form</b>	Liquid, 1 mg/ml

## Product

**Swiss-Prot No.:** Q13541

**Other Names:** 4EBP1; EIF4EBP1; Eukaryotic translation initiation factor 4E binding protein 1; Insulin-stimulated EIF-4E binding protein PHAS-I; P/OKCL.6; PHAS-1; PHAS-I

## Specificity and Sensitivity

4E-BP1 (Phospho-Thr70) antibody detects endogenous levels of 4E-BP1 only when phosphorylated at threonine 70.

## Source and Purification

The antiserum was produced against synthesized phosphopeptide derived from human 4E-BP1 around the phosphorylation site of threonine 70 (T-K-T<sup>P</sup>-P-P). The antibody was affinity-purified from rabbit antiserum by affinity-chromatography using epitope-specific immunogen.

## Application Notes

Optimal working dilutions should be determined experimentally by the investigator. Suggested starting dilutions are as follows:

IHC: 1:50~1:100      ELISA: 1:1000

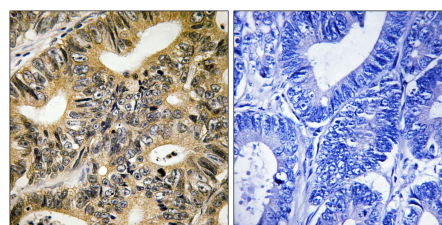
## Storage Buffer

Rabbit IgG in phosphate buffered saline (without Mg<sup>2+</sup> and Ca<sup>2+</sup>), pH 7.4, 150mM NaCl, 0.02% sodium azide and 50% glycerol.

## Storage Instructions

Stable for 1 year at -20°C from date of shipment. For maximum recovery of product, centrifuge the original vial after thawing and prior to removing the cap. Aliquot to avoid repeated freezing and thawing. Aliquot will be stable at 4°C for 3 months.

## Images



P-peptide

-

+

Immunohistochemistry analysis of paraffin-embedded human colon carcinoma tissue using 4E-BP1 (Phospho-Thr70) antibody.