

Anti- B-Raf (Phospho-Thr753) Polyclonal Antibody



| Catalog No. | Size |
|-------------|--------|
| A100326-01 | 50 µl |
| A100326-02 | 100 µl |

| | |
|-------------|--|
| Specificity | Anti- B-Raf (Phospho-Thr753) (human mouse rat) |
| Source | Rabbit Polyclonal |
| Application | WB ELISA |
| Form | Liquid, 1 mg/ml |

Product

Swiss-Prot No.: P15056

Other Names: B-RAF; B-RAF proto-oncogene serine/threonine-protein kinase; B-Raf proto-oncogene serine/threonine-protein kinase; BRAF; BRAF1; c-RMIL; EC 2.7.1.37; EC 2.7.11.1; kinase B-Raf; p94; RAFB1; RMIL; RMIL serine/threonine-protein kinase; v-Raf murine sarcoma viral oncogene homolog B1

Specificity and Sensitivity

B-Raf (Phospho-Thr753) antibody detects endogenous levels of B-Raf only when phosphorylated at threonine 753.

Source and Purification

The antiserum was produced against synthesized phosphopeptide derived from human B-Raf around the phosphorylation site of threonine 753 (P-K-T^P-P-I). The antibody was affinity-purified from rabbit antiserum by affinity-chromatography using epitope-specific immunogen.

Application Notes

Optimal working dilutions should be determined experimentally by the investigator. Suggested starting dilutions are as follows:

WB: 1:500~1:3000 ELISA: 1:5000

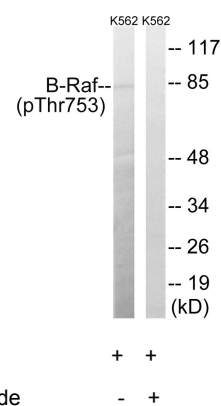
Storage Buffer

Rabbit IgG in phosphate buffered saline (without Mg²⁺ and Ca²⁺), pH 7.4, 150mM NaCl, 0.02% sodium azide and 50% glycerol.

Storage Instructions

Stable for 1 year at -20°C from date of shipment. For maximum recovery of product, centrifuge the original vial after thawing and prior to removing the cap. Aliquot to avoid repeated freezing and thawing. Aliquot will be stable at 4°C for 3 months.

Images



Western blot analysis of extracts from K562 cells, treated with EGF (200ng/ml, 30mins), using B-Raf (Phospho-Thr753) antibody.