

Anti- CDC25C (Phospho-Ser198) Polyclonal Antibody



<u>Catalog No.</u>	<u>Size</u>
A100330-01	50 µl
A100330-02	100 µl

Specificity	Anti- CDC25C (Phospho-Ser198) (human)
Source	Rabbit Polyclonal
Application	ELISA IHC
Form	Liquid, 1 mg/ml

Product

Swiss-Prot No.: P30307

Other Names: CDC25M1; dual specificity phosphatase Cdc25C; EC 3.1.3.48; M-phase inducer phosphatase 3; MPI1B; MPIP3

Specificity and Sensitivity

CDC25C (Phospho-Ser198) antibody detects endogenous levels of CDC25C only when phosphorylated at serine 198.

Source and Purification

The antiserum was produced against synthesized phosphopeptide derived from human CDC25C around the phosphorylation site of serine 198 (E-F-S^P-L-K). The antibody was affinity-purified from rabbit antiserum by affinity-chromatography using epitope-specific immunogen.

Application Notes

Optimal working dilutions should be determined experimentally by the investigator. Suggested starting dilutions are as follows:

IHC: 1:50~1:100 ELISA: 1:1000

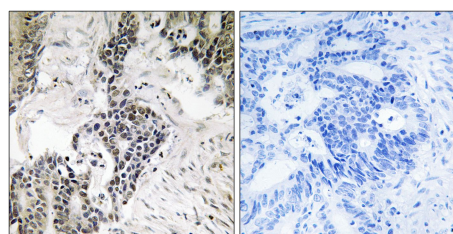
Storage Buffer

Rabbit IgG in phosphate buffered saline (without Mg²⁺ and Ca²⁺), pH 7.4, 150mM NaCl, 0.02% sodium azide and 50% glycerol.

Storage Instructions

Stable for 1 year at -20°C from date of shipment. For maximum recovery of product, centrifuge the original vial after thawing and prior to removing the cap. Aliquot to avoid repeated freezing and thawing. Aliquot will be stable at 4°C for 3 months.

Images



P-peptide - +

Immunohistochemistry analysis of paraffin-embedded human colon carcinoma tissue, using CDC25C (Phospho-Ser198) antibody.