

# Anti- MEF2C (Phospho-Ser396) Polyclonal Antibody



Catalog No.	Size
A100354-01	50 µl
A100354-02	100 µl

Specificity	Anti- MEF2C (Phospho-Ser396) (human mouse)
Source	Rabbit Polyclonal
Application	WB ELISA IHC
Form	Liquid, 1 mg/ml

## Product

**Swiss-Prot No.:** Q06413

**Other Names:** Myocyte enhancer factor 2C; Myocyte-specific enhancer factor 2C; Similar to MADS box transcription enhancer factor 2 polypeptide C

## Specificity and Sensitivity

MEF2C (Phospho-Ser396) antibody detects endogenous levels of MEF2C only when phosphorylated at serine 396.

## Source and Purification

The antiserum was produced against synthesized phosphopeptide derived from human MEF2C around the phosphorylation site of serine 396 (P-V-S<sup>P</sup>-P-P). The antibody was affinity-purified from rabbit antiserum by affinity-chromatography using epitope-specific immunogen.

## Application Notes

Optimal working dilutions should be determined experimentally by the investigator. Suggested starting dilutions are as follows:

WB: 1:500~1:3000 IHC: 1:50~1:100 ELISA: 1:1000

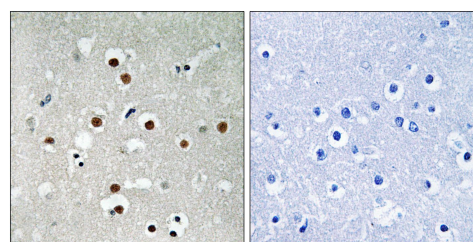
## Storage Buffer

Rabbit IgG in phosphate buffered saline (without Mg<sup>2+</sup> and Ca<sup>2+</sup>), pH 7.4, 150mM NaCl, 0.02% sodium azide and 50% glycerol.

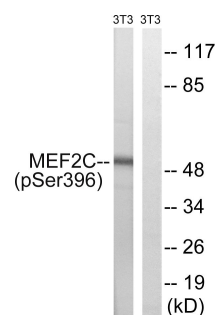
## Storage Instructions

Stable for 1 year at -20°C from date of shipment. For maximum recovery of product, centrifuge the original vial after thawing and prior to removing the cap. Aliquot to avoid repeated freezing and thawing. Aliquot will be stable at 4°C for 3 months.

## Images



P-peptide - +  
Immunohistochemistry analysis of paraffin-embedded human brain tissue using MEF2C (Phospho-Ser396) antibody.



starved + +  
P-peptide - +

Western blot analysis of extracts from 3T3 cells, treated with starved (24hours), using MEF2C (Phospho-Ser396) antibody.