

Anti- TSC2 (Phospho-Tyr1571) Polyclonal Antibody



Catalog No.	Size
A100387-01	50 µl
A100387-02	100 µl

Specificity	Anti- TSC2 (Phospho-Tyr1571) (human mouse rat)
Source	Rabbit Polyclonal
Application	ELISA IHC
Form	Liquid, 1 mg/ml

Product

Swiss-Prot No.: P49815

Other Names: TSC2; tuberous sclerosis 2 gene; Tuberous sclerosis 2 homolog protein; Tuberous sclerosis 2 protein

Specificity and Sensitivity

TSC2 (Phospho-Tyr1571) antibody detects endogenous levels of TSC2 only when phosphorylated at tyrosine 1571.

Source and Purification

The antiserum was produced against synthesized phosphopeptide derived from human TSC2 around the phosphorylation site of tyrosine 1571 (Y-R-Y^P-T-E).

The antibody was affinity-purified from rabbit antiserum by affinity-chromatography using epitope-specific immunogen.

Application Notes

Optimal working dilutions should be determined experimentally by the investigator. Suggested starting dilutions are as follows:

IHC: 1:50~1:100 ELISA: 1:5000

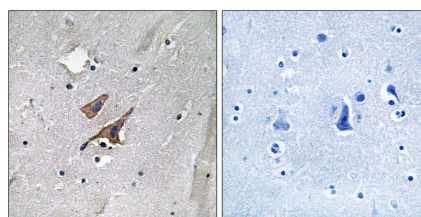
Storage Buffer

Rabbit IgG in phosphate buffered saline (without Mg²⁺ and Ca²⁺), pH 7.4, 150mM NaCl, 0.02% sodium azide and 50% glycerol.

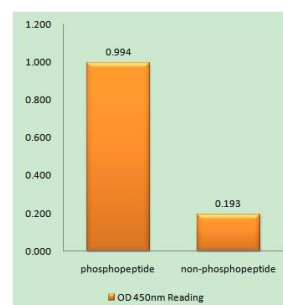
Storage Instructions

Stable for 1 year at -20°C from date of shipment. For maximum recovery of product, centrifuge the original vial after thawing and prior to removing the cap. Aliquot to avoid repeated freezing and thawing. Aliquot will be stable at 4°C for 3 months.

Images



Immunohistochemistry analysis of paraffin-embedded human brain tissue using TSC2 (Phospho-Tyr1571) antibody.



TSC2 (Phospho-Tyr1571) antibody reacts with epitope-specific phosphopeptide and corresponding non-phosphopeptide. The absorbance readings at 450 nm are shown in the ELISA figure.