

Anti- TUBA1/3/4 (Phospho-Tyr272) Polyclonal Antibody



Catalog No.	Size
A100402-01	50 µl
A100402-02	100 µl

Specificity	Anti- TUBA1/3/4 (Phospho-Tyr272) (human mouse rat)
Source	Rabbit Polyclonal
Application	WB ELISA
Form	Liquid, 1 mg/ml

Product

Swiss-Prot No.:

Q71U36/P68363/Q9BQE3/Q13748/Q6PEY2/P68366

Other Names: Alpha-tubulin 1; TBA1; TBA1A; TBA4A;
Testis-specific alpha- tubulin; TUBA1; Tubulin alpha-1 chain;
Tubulin H2-alpha

Specificity and Sensitivity

TUBA1/3/4 (Phospho-Tyr272) antibody detects endogenous levels of TUBA1/3/4 only when phosphorylated at tyrosine 272.

Source and Purification

The antiserum was produced against synthesized phosphopeptide derived from human TUBA1/3/4 around the phosphorylation site of tyrosine 272 (A-T-Y^P-A-P).

The antibody was affinity-purified from rabbit antiserum by affinity-chromatography using epitope-specific immunogen.

Application Notes

Optimal working dilutions should be determined experimentally by the investigator. Suggested starting dilutions are as follows:

WB: 1:500~1:3000 ELISA: 1:40000

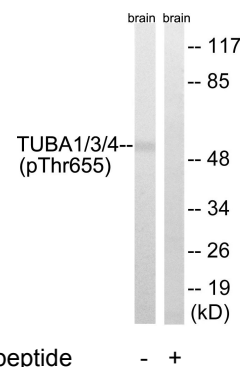
Storage Buffer

Rabbit IgG in phosphate buffered saline (without Mg²⁺ and Ca²⁺), pH 7.4, 150mM NaCl, 0.02% sodium azide and 50% glycerol.

Storage Instructions

Stable for 1 year at -20°C from date of shipment. For maximum recovery of product, centrifuge the original vial after thawing and prior to removing the cap. Aliquot to avoid repeated freezing and thawing. Aliquot will be stable at 4°C for 3 months.

Images



Western blot analysis of extracts from Rat brain cells, using TUBA1/3/4 (Phospho-Tyr272) antibody.