

# Anti- DRP1(Phospho-Ser637) Polyclonal Antibody

Catalog No.	Size
A100417-01	50µl
A100417-02	100µl



<b>Specificity</b>	Anti- DRP1(Phospho-Ser637) (Human; Mouse; Rat)
<b>Source</b>	Rabbit Polyclonal
<b>Application</b>	ELISA WB
<b>Form</b>	Liquid, 1 mg/ml

## Background Information

**Swiss-Prot No.:** O00429

**Other Names:** DLP1; DNM1L; Dnm1p/Vps1p-like protein; DRP1; DVLP; Dymple; dynamin 1-like; Dynamin family member proline-rich carboxyl-terminal domain less; Dynamin-1-like protein; Dynamin-like protein; Dynamin-like protein 4; Dynamin-like protein IV; Dynamin-related protein 1; DYNIV-11; FLJ41912; HdynIV; VPS1

## Specificity and Sensitivity

DRP1 (Phospho-Ser637) antibody detects endogenous levels of DRP1 only when phosphorylated at serine 637.

## Source and Purification

The antiserum was produced against synthesized peptide derived from internal of human DRP1 around the phosphorylation site of serine 637.

The antibody was affinity-purified from rabbit antiserum by affinity-chromatography using epitope-specific immunogen.

## Application Notes

Optimal working dilutions should be determined experimentally by the investigator. Suggested starting dilutions are as follows: WB: 1:500~1:3000 ELISA: 1:10000

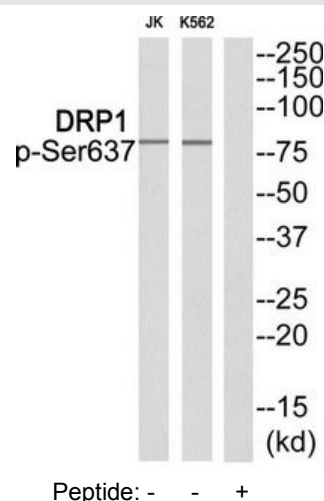
## Storage Buffer

Rabbit IgG in phosphate buffered saline (without  $Mg^{2+}$  and  $Ca^{2+}$ ), pH 7.4, 150mM NaCl, 0.02% sodium azide and 50% glycerol.

## Storage Instructions

Stable for 1 year at  $-20^{\circ}C$  from date of shipment. For maximum recovery of product, centrifuge the original vial after thawing and prior to removing the cap. Aliquot to avoid repeated freezing and thawing. Aliquot will be stable at  $4^{\circ}C$  for 3 months.

## Images



Western blot analysis of extracts from JK cells and K562 cells, using DRP1 (Phospho-Ser637) antibody.