

# Anti-Phospho-CD227/MUC1(Tyr1229) Polyclonal Antibody



<u>Catalog No.</u>	<u>Size</u>
A100442-01	50 µl
A100442-02	100 µl

<b>Specificity</b>	Anti- Phospho-CD227/MUC1(Tyr1229) (human)
<b>Source</b>	Rabbit Polyclonal
<b>Application</b>	WB IHC IF
<b>Form</b>	Liquid, 1 mg/ml

## Product

**Swiss-Prot No.:** P15941

**Other Names:** Breast carcinoma-associated antigen DF3, CD227, Carcinoma-associated mucin, EMA,Episialin, H23AG, MUC-1, MUC1, Mucin 1 precursor, PEM, PEMT, PUM, Peanut-reactive urinary mucin, Polymorphic epithelial mucin, Tumor-associated epithelial membrane antigen, T

## Specificity and Sensitivity

Phospho-CD227/MUC1(Tyr1229)Antibody detects endogenous levels of CD227 and MUC1 only when phosphorylated at Tyrosine 1229..

## Source and Purification

A synthesized peptide derived from human CD227/MUC1 around the phosphorylation site of Tyrosine 1229.

The antibody was affinity-purified from rabbit antiserum by affinity-chromatography using epitope-specific immunogen.

## Application Notes

Optimal working dilutions should be determined experimentally by the investigator. Suggested starting dilutions are as follows:

WB: 1:500~1:3000    IHC: 1:50~1:100    IF: 1:100-1:500

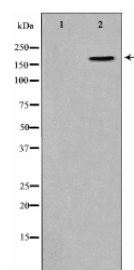
## Storage Buffer

Rabbit IgG in phosphate buffered saline (without Mg<sup>2+</sup> and Ca<sup>2+</sup>), pH 7.4, 150mM NaCl, 0.02% sodium azide and 50% glycerol.

## Storage Instructions

Stable for 1 year at -20°C from date of shipment. For maximum recovery of product, centrifuge the original vial after thawing and prior to removing the cap. Aliquot to avoid repeated freezing and thawing. Aliquot will be stable at 4°C for 3 months.

## Images



Western blot analysis on HepG2 cell lysate using Phospho-CD227/MUC1(Tyr1229) antibody, The lane on the left is treated with the antigen-specific peptide..

## Related Products

PW001: Super ECL Assay kit

E030120 : HRP, Goat Anti-Rabbit IgG(H+L)

E030220 : AP, Goat Anti-Rabbit IgG(H+L)

E021010: Anti-GAPDH Mouse Monoclonal Antibody

E021020: Anti-beta Actin Mouse Monoclonal Antibody

E022330: Anti-His Tag Mouse Monoclonal Antibody-HRP