

Anti- Phospho-EPS15(Tyr849) Polyclonal Antibody



<u>Catalog No.</u>	<u>Size</u>
A100459-01	50 µl
A100459-02	100 µl

Specificity	Anti- Phospho-EPS15(Tyr849) (human mouse rat)
Source	Rabbit Polyclonal
Application	WB
Form	Liquid, 1 mg/ml

Product

Swiss-Prot No.: P42566

Other Names: AF-1p protein; AF1P; EP15; epidermal growth factor receptor pathway substrate 15 (AF1p); epidermal growth factor receptor substrate 15

Specificity and Sensitivity

Phospho-EPS15(Tyr849) Antibody detects endogenous levels of EPS15 only when phosphorylated at Tyrosine 849.

Source and Purification

A synthesized peptide derived from human EPS15 around the phosphorylation site of Tyrosine 849.

The antibody was affinity-purified from rabbit antiserum by affinity-chromatography using epitope-specific immunogen.

Application Notes

Optimal working dilutions should be determined experimentally by the investigator. Suggested starting dilutions are as follows:

WB: 1:500~1:3000

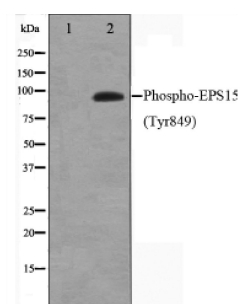
Storage Buffer

Rabbit IgG in phosphate buffered saline (without Mg^{2+} and Ca^{2+}), pH 7.4, 150mM NaCl, 0.02% sodium azide and 50% glycerol.

Storage Instructions

Stable for 1 year at -20°C from date of shipment. For maximum recovery of product, centrifuge the original vial after thawing and prior to removing the cap. Aliquot to avoid repeated freezing and thawing. Aliquot will be stable at 4°C for 3 months.

Images



Western blot analysis on HepG2 cell lysate using Phospho-EPS15(Tyr849) antibody. The lane on the left is treated with the antigen-specific peptide.

Related Products

PW001: Super ECL Assay kit

E030120 : HRP, Goat Anti-Rabbit IgG(H+L)

E030220 : AP, Goat Anti-Rabbit IgG(H+L)

E021010: Anti-GAPDH Mouse Monoclonal Antibody

E021020: Anti-beta Actin Mouse Monoclonal Antibody

E022330: Anti-His Tag Mouse Monoclonal Antibody-HRP