

Anti-Phospho-Amyloid beta A4 (Thr743/668) Polyclonal Antibody



Catalog No.	Size
A100535-01	50 µl
A100535-02	100 µl

Specificity	Anti- Phospho-Amyloid beta A4 (Thr743/668) (human mouse rat)
Source	Rabbit Polyclonal
Application	WB IHC IF/ICC
Form	Liquid, 1 mg/ml

Product

Swiss-Prot No.: P05067

Other Names: A4; AAA;ABETA;ABPP; AD1; AICD-50; AICD-57; AICD-59; AID(50); AID(57); AID(59); Alzheimer disease amyloid protein; amyloid beta (A4) precursor protein; Amyloid beta A4 protein; Amyloid intracellular domain 50; Amyloid intracellular domain 57; Amyloid intracellular domain 59; APP; APPI; beta-amyloid peptide; Beta-amyloid protein 40; Beta-amyloid protein 42; Beta-APP40;

Specificity and Sensitivity

Phospho-Amyloid beta A4 (Thr743/668) Antibody detects endogenous levels of Amyloid beta A4 only when phosphorylated at Threonine 743/668.

Source and Purification

A synthesized peptide derived from human Amyloid beta A4 around the phosphorylation site of Threonine 743/668.

The antibody was affinity-purified from rabbit antiserum by affinity-chromatography using epitope-specific immunogen.

Application Notes

Optimal working dilutions should be determined experimentally by the investigator. Suggested starting dilutions are as follows:

WB: 1:500~1:3000 IHC: 1:50~1:200 IF/ICC: 1:100-1:500

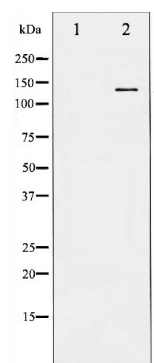
Storage Buffer

Rabbit IgG in phosphate buffered saline (without Mg²⁺ and Ca²⁺), pH 7.4, 150mM NaCl, 0.02% sodium azide and 50% glycerol

Storage Instructions

Stable for 1 year at -20°C from date of shipment. For maximum recovery of product, centrifuge the original vial after thawing and prior to removing the cap. Aliquot to avoid repeated freezing and thawing. Aliquot will be stable at 4°C for 3 months.

Images



Western blot analysis of Amyloid beta A4 phosphorylation expression in HeLa whole cell lysates, The lane on the left is treated with the antigen-specific peptide.

Related Products

PW001: Super ECL Assay kit

E030120 : HRP, Goat Anti-Rabbit IgG(H+L)

E030220 : AP, Goat Anti-Rabbit IgG(H+L)

E021010: Anti-GAPDH Mouse Monoclonal Antibody

E021020: Anti-beta Actin Mouse Monoclonal Antibody

E022330: Anti-His Tag Mouse Monoclonal Antibody-HRP