

Anti-Shc (Ab-349) Polyclonal Antibody



<u>Catalog No.</u>	<u>Size</u>
A200006-01	50 µl
A200006-02	100 µl

Specificity	Anti-Shc (Ab-349) (human mouse rat)
Source	Rabbit Polyclonal
Application	WB IHC ELISA IF
Form	Liquid, 1 mg/ml

Product

Swiss-Prot No.: P29353

Other Names: SH2 domain protein C1, SHC, SHC-transforming protein 1, SHCA, Src homology 2 domain-containing-transforming protein C1

Specificity and Sensitivity

Shc (Ab-349) antibody detects endogenous levels of total Shc protein.

Source and Purification

The antiserum was produced against synthesized non-phosphopeptide derived from human Shc around the phosphorylation site of tyrosine 349 (H-Q-Y^P-Y-N). The antibody was affinity-purified from rabbit antiserum by affinity-chromatography using epitope-specific immunogen.

Application Notes

Optimal working dilutions should be determined experimentally by the investigator. Suggested starting dilutions are as follows:

WB: 1:500~1:3000 ELISA: 1:20000
IHC: 1:50~1:100 IF: 1:100~1:500

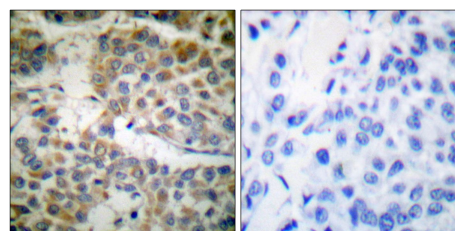
Storage Buffer

Rabbit IgG in phosphate buffered saline (without Mg²⁺ and Ca²⁺), pH 7.4, 150mM NaCl, 0.02% sodium azide and 50% glycerol.

Storage Instructions

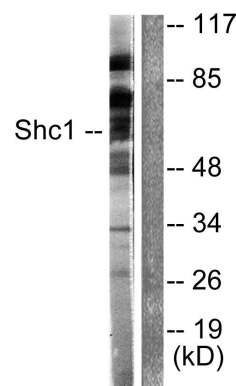
Stable for 1 year at -20°C from date of shipment. For maximum recovery of product, centrifuge the original vial after thawing and prior to removing the cap. Aliquot to avoid repeated freezing and thawing. Aliquot will be stable at 4°C for 3 months.

Images



Peptide - +

Immunohistochemical analysis of paraffin-embedded human breast carcinoma tissue using Shc (Ab-349) antibody.



Calyculin A + +
Peptide - +

Western blot analysis of extracts from HeLa cells treated with Calyculin A (50nM, 15min), using Shc (Ab-349) antibody.