

Anti-C/EBP- α (Ab-21) Polyclonal Antibody



Catalog No.	Size
A200018-01	50 μ l
A200018-02	100 μ l

Specificity	Anti-C/EBP- α (Ab-21) (human mouse rat)
Source	Rabbit Polyclonal
Application	WB IHC ELISA
Form	Liquid, 1 mg/ml

Product

Swiss-Prot No.: P49715

Other Names: C/EBP alpha, CCAAT/enhancer binding protein alpha, CEBPA

Specificity and Sensitivity

C/EBP- α (Ab-21) antibody detects endogenous levels of total C/EBP- α protein.

Source and Purification

The antiserum was produced against synthesized non-phosphopeptide derived from human C/EBP- α around the phosphorylation site of serine 21 (L-Q-S^P-P-P).

The antibody was affinity-purified from rabbit antiserum by affinity-chromatography using epitope-specific immunogen.

Application Notes

Optimal working dilutions should be determined experimentally by the investigator. Suggested starting dilutions are as follows:

WB: 1:500~3000 ELISA: 1:5000 IHC: 1:50~1:100

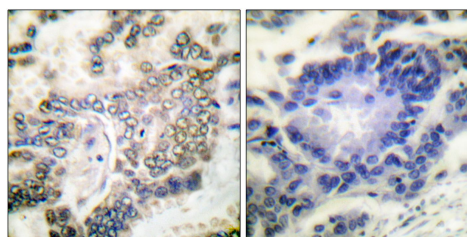
Storage Buffer

Rabbit IgG in phosphate buffered saline (without Mg²⁺ and Ca²⁺), pH 7.4, 150mM NaCl, 0.02% sodium azide and 50% glycerol.

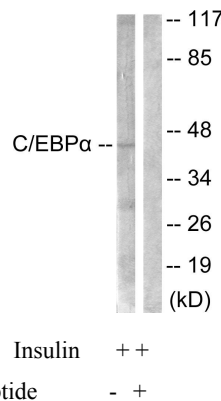
Storage Instructions

Stable for 1 year at -20°C from date of shipment. For maximum recovery of product, centrifuge the original vial after thawing and prior to removing the cap. Aliquot to avoid repeated freezing and thawing. Aliquot will be stable at 4°C for 3 months.

Images



P-peptide - +
Immunohistochemical analysis of paraffin-embedded human lung carcinoma tissue, using C/EBP- α (Ab-21) antibody.



Western blot analysis of extracts from 293 cells treated with Insulin (0.01U/ml, 15mins), using C/EBP- α (Ab-21) antibody.