

# Anti-SGK (Ab-422) Polyclonal Antibody



Catalog No.	Size
A200029-01	50 µl
A200029-02	100 µl

<b>Specificity</b>	Anti-SGK (Ab-422) (human mouse rat)
<b>Source</b>	Rabbit Polyclonal
<b>Application</b>	WB IHC ELISA
<b>Form</b>	Liquid, 1 mg/ml

## Product

**Swiss-Prot No.:** O00141

**Other Names:** SGK1,  
SERUM/GLUCOCORTICOID-REGULATED KINASE

## Specificity and Sensitivity

SGK (Ab-422) antibody detects endogenous levels of total SGK protein.

## Source and Purification

The antiserum was produced against synthesized non-phosphopeptide derived from human SGK around the phosphorylation site of serine 422 (G-F-S<sup>P</sup>-Y-A).

The antibody was affinity-purified from rabbit antiserum by affinity-chromatography using epitope-specific immunogen.

## Application Notes

Optimal working dilutions should be determined experimentally by the investigator. Suggested starting dilutions are as follows:

WB: 1:500~1:3000    ELISA: 1:5000    IHC: 1:50~1:100

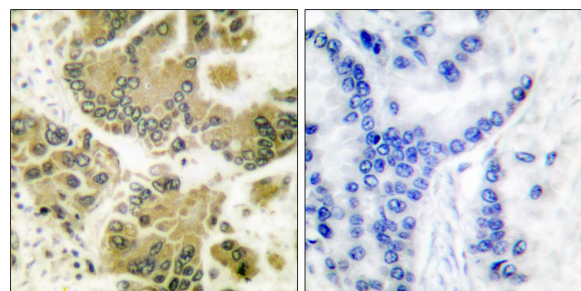
## Storage Buffer

Rabbit IgG in phosphate buffered saline (without Mg<sup>2+</sup> and Ca<sup>2+</sup>), pH 7.4, 150mM NaCl, 0.02% sodium azide and 50% glycerol.

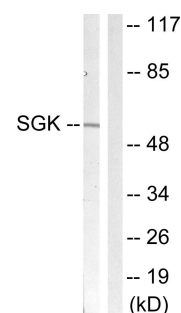
## Storage Instructions

Stable for 1 year at -20°C from date of shipment. For maximum recovery of product, centrifuge the original vial after thawing and prior to removing the cap. Aliquot to avoid repeated freezing and thawing. Aliquot will be stable at 4°C for 3 months.

## Images



Peptide                      -                      +  
Immunohistochemical analysis of paraffin-embedded human lung carcinoma tissue using SGK (Ab-422) antibody.



Peptide                      -                      +

Western blot analysis of extracts from Jurkat cells, using SGK (Ab-422) antibody.