

# Anti-MITF (Ab-180/73) Polyclonal Antibody



Catalog No.	Size
A200056-01	50 µl
A200056-02	100 µl

<b>Specificity</b>	Anti-MITF (Ab-180/73) (human mouse)
<b>Source</b>	Rabbit Polyclonal
<b>Application</b>	WB ELISA IF IHC
<b>Form</b>	Liquid, 1 mg/ml

## Product

**Swiss-Prot No.:** O75030

**Other Names:** MITF M1, Microphthalmia-associated transcription factor

## Specificity and Sensitivity

MITF (Ab-180/73) antibody detects endogenous levels of total MITF protein.

## Source and Purification

The antiserum was produced against synthesized non-phosphopeptide derived from human MITF around the phosphorylation site of serine 180/73 (P-N-S<sup>P</sup>-P-M).

The antibody was affinity-purified from rabbit antiserum by affinity-chromatography using epitope-specific immunogen.

## Application Notes

Optimal working dilutions should be determined experimentally by the investigator. Suggested starting dilutions are as follows:

WB: 1:500~1:3000    IF: 1:100~1:500  
ELISA: 1:10000    IHC: 1:50~1:100

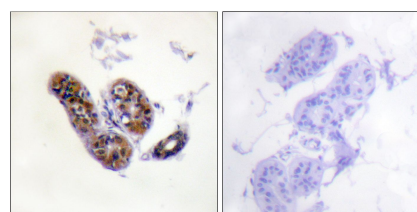
## Storage Buffer

Rabbit IgG in phosphate buffered saline (without Mg<sup>2+</sup> and Ca<sup>2+</sup>), pH 7.4, 150mM NaCl, 0.02% sodium azide and 50% glycerol.

## Storage Instructions

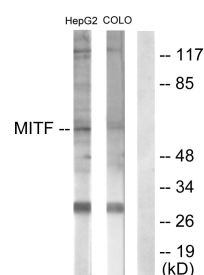
Stable for 1 year at -20°C from date of shipment. For maximum recovery of product, centrifuge the original vial after thawing and prior to removing the cap. Aliquot to avoid repeated freezing and thawing. Aliquot will be stable at 4°C for 3 months.

## Images



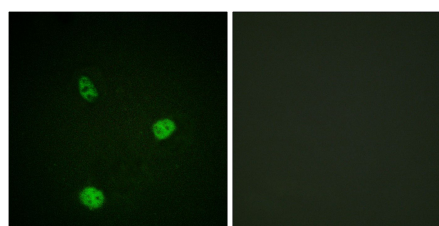
Peptide                      -                      +

Immunohistochemistry analysis of paraffin-embedded human skin tissue using MITF (Ab-180/73) antibody.



Peptide                      -                      -                      +

Western blot analysis of extracts from HepG2 cells (lane 1) and COLO205 cells (lane 2), using MITF (Ab-180/73) antibody.



Peptide                      -                      +

Immunofluorescence analysis of HeLa cells, using MITF (Ab-180/73) antibody.