

Anti-SF1 (Ab-82) Polyclonal Antibody



Catalog No.	Size
A200064-01	50 µl
A200064-02	100 µl

Specificity	Anti-SF1 (Ab-82) (human mouse)
Source	Rabbit Polyclonal
Application	WB ELISA IHC IF
Form	Liquid, 1 mg/ml

Product

Swiss-Prot No.: Q15637

Other Names: BBP, CW17, Mammalian branch point binding protein mBBP, SF01, Splicing factor 1, Splicing factor SF1, Transcription factor ZFM1, ZFM1, ZFP162, ZNF162, Zinc finger gene in MEN1 locus, Zinc finger protein 162, Mzfm

Specificity and Sensitivity

SF1 (Ab-82) antibody detects endogenous levels of total SF1 protein.

Source and Purification

The antiserum was produced against synthesized non-phosphopeptide derived from human SF1 around the phosphorylation site of serine 82 (S-P-S^P-P-E).

The antibody was affinity-purified from rabbit antiserum by affinity-chromatography using epitope-specific immunogen.

Application Notes

Optimal working dilutions should be determined experimentally by the investigator. Suggested starting dilutions are as follows:

WB: 1:500~1:3,000 IHC: 1:50~1:100

IF: 1:100~1:500 ELISA: 1:20000

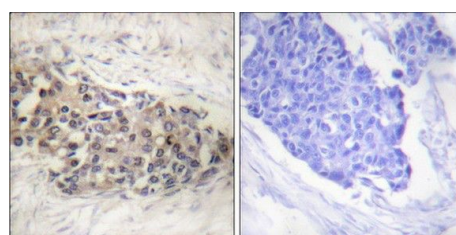
Storage Buffer

Rabbit IgG in phosphate buffered saline (without Mg²⁺ and Ca²⁺), pH 7.4, 150mM NaCl, 0.02% sodium azide and 50% glycerol.

Storage Instructions

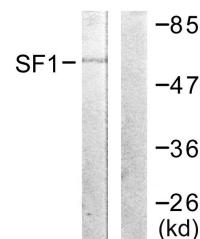
Stable for 1 year at -20°C from date of shipment. For maximum recovery of product, centrifuge the original vial after thawing and prior to removing the cap. Aliquot to avoid repeated freezing and thawing. Aliquot will be stable at 4°C for 3 months.

Images



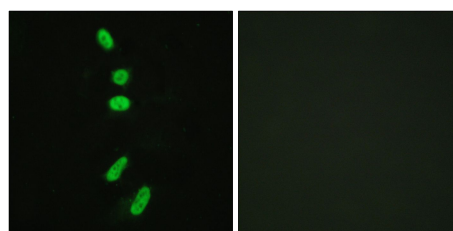
Peptide - +

Immunohistochemistry analysis of paraffin-embedded human brain tissue using SF1 (Ab-82) antibody.



Peptide - +

Western blot analysis of extracts from COLO205 cells, using SF1 (Ab-82) antibody.



Peptide - +

Immunofluorescence analysis of HeLa cells, using SF1 (Ab-82) antibody.