

Anti-p38 MAPK (Ab-322) Polyclonal Antibody



Catalog No.	Size
A200079-01	50 µl
A200079-02	100 µl

Specificity	Anti-p38 MAPK (Ab-322) (human mouse rat)
Source	Rabbit Polyclonal
Application	WB ELISA IHC IF
Form	Liquid, 1 mg/ml

Product

Swiss-Prot No.: Q16539

Other Names: CRK1, CSAID binding protein, CSBP, CSBP1, CSBP2, Cytokine suppressive anti-inflammatory drug binding protein, EC 2.7.11.24, MAP kinase MXI2, MAP kinase p38, MAPK14, MAX-interacting protein 2, MK14, MXI2, Mitogen-activated protein kinase 14, Mitogen-activated protein kinase p38, kinase p38-alpha

Specificity and Sensitivity

p38 MAPK (Ab-322) antibody detects endogenous levels of total p38 MAPK protein.

Source and Purification

The antiserum was produced against synthesized non-phosphopeptide derived from human p38 MAPK around the phosphorylation site of tyreonine 322 (D-P-Y-D-Q). The antibody was affinity-purified from rabbit antiserum by affinity-chromatography using epitope-specific immunogen.

Application Notes

Optimal working dilutions should be determined experimentally by the investigator. Suggested starting dilutions are as follows:

WB: 1:500~1:3000 IHC: 1:50~1:100

IF: 1:100~1:500 ELISA: 1:1000

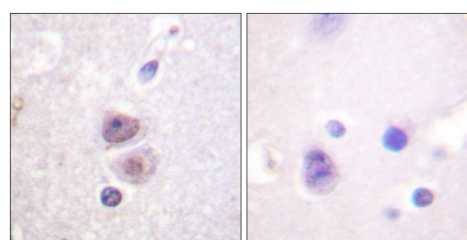
Storage Buffer

Rabbit IgG in phosphate buffered saline (without Mg²⁺ and Ca²⁺), pH 7.4, 150mM NaCl, 0.02% sodium azide and 50% glycerol.

Storage Instructions

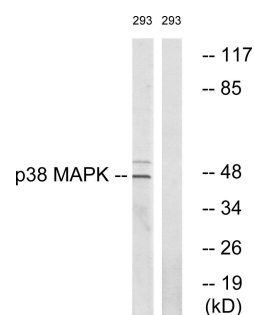
Stable for 1 year at -20°C from date of shipment. For maximum recovery of product, centrifuge the original vial after thawing and prior to removing the cap. Aliquot to avoid repeated freezing and thawing. Aliquot will be stable at 4°C for 3 months.

Images



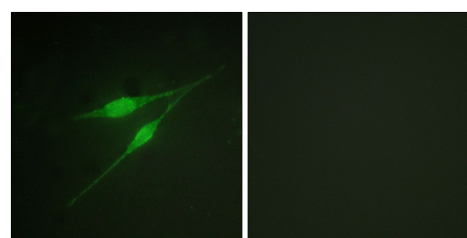
Peptide - +

Immunohistochemistry analysis of paraffin-embedded human brain tissue, using p38 MAPK (Ab-322) antibody.



Peptide - +

Western blot analysis of extracts from 293 cells, using p38 MAPK (Ab-322) antibody.



Peptide - +

Immunofluorescence analysis of NIH/3T3 cells, using p38 MAPK (Ab-322) antibody.