

# Anti-Akt (Ab-326) Polyclonal Antibody



Catalog No.	Size
A200083-01	50 µl
A200083-02	100 µl

<b>Specificity</b>	Anti-Akt (Ab-326) (human mouse rat)
<b>Source</b>	Rabbit Polyclonal
<b>Application</b>	WB IHC ELISA IF
<b>Form</b>	Liquid, 1 mg/ml

## Product

**Swiss-Prot No.:** P31749

**Other Names:** AKT, AKT1 kinase, C-AKT, EC 2.7.11.1, PKB, PKB-alpha, Protein kinase B, RAC, RAC-PK-alpha, RAC-alpha serine/threonine kinase, kinase Akt1

## Specificity and Sensitivity

Akt (Ab-326) antibody detects endogenous levels of total Akt protein.

## Source and Purification

The antiserum was produced against synthesized non-phosphopeptide derived from human Akt around the phosphorylation site of tyrosine 326 (N-D-Y<sup>P</sup>-G-R). The antibody was affinity-purified from rabbit antiserum by affinity-chromatography using epitope-specific immunogen.

## Application Notes

Optimal working dilutions should be determined experimentally by the investigator. Suggested starting dilutions are as follows:

WB: 1:500~1:3000      IHC: 1:50~1:100

IF: 1:100~1:500      ELISA: 1:20000

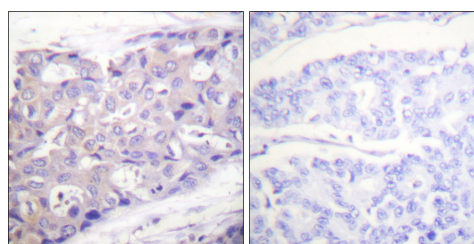
## Storage Buffer

Rabbit IgG in phosphate buffered saline (without Mg<sup>2+</sup> and Ca<sup>2+</sup>), pH 7.4, 150mM NaCl, 0.02% sodium azide and 50% glycerol.

## Storage Instructions

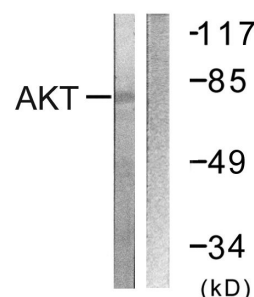
Stable for 1 year at -20°C from date of shipment. For maximum recovery of product, centrifuge the original vial after thawing and prior to removing the cap. Aliquot to avoid repeated freezing and thawing. Aliquot will be stable at 4°C for 3 months.

## Images



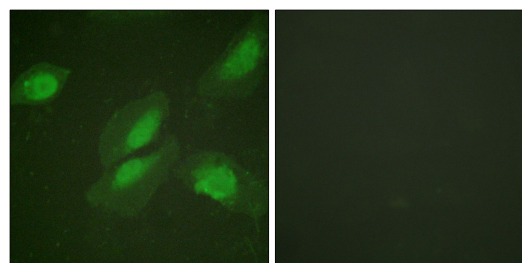
Peptide      -      +

Immunohistochemistry analysis of paraffin-embedded human breast carcinoma tissue using Akt (Ab-326) antibody.



Insulin    +    +  
Peptide    -    +

Western blot analysis of extracts from NIH/3T3 cells, treated with Insulin (0.01U/ml, 15mins), using Akt (Ab-326) antibody.



Peptide      -      +

Immunofluorescence analysis of HeLa cells, using Akt (Ab-326) antibody.