

# Anti-PPP1R2 (Ab-120/121) Polyclonal Antibody



Catalog No.	Size
A200110-01	50 µl
A200110-02	100 µl

Specificity	Anti-PPP1R2 (Ab-120/121) (human mouse rat)
Source	Rabbit Polyclonal
Application	WB ELISA IHC
Form	Liquid, 1 mg/ml

## Product

Swiss-Prot No.: P41236

Other Names: I-2, IPP-2, IPP2, Protein phosphatase inhibitor 2

## Specificity and Sensitivity

PPP1R2 (Ab-120/121) antibody detects endogenous levels of total PPP1R2 protein.

## Source and Purification

The antiserum was produced against synthesized non-phosphopeptide derived from human PPP1R2 around the phosphorylation site of serine 120 and serine 121 (Q-E-S<sup>P</sup>-S<sup>P</sup>-G-E).

The antibody was affinity-purified from rabbit antiserum by affinity-chromatography using epitope-specific immunogen.

## Application Notes

Optimal working dilutions should be determined experimentally by the investigator. Suggested starting dilutions are as follows:

WB: 1:500~1:3000 IHC: 1:50~1:100 ELISA: 1:5000

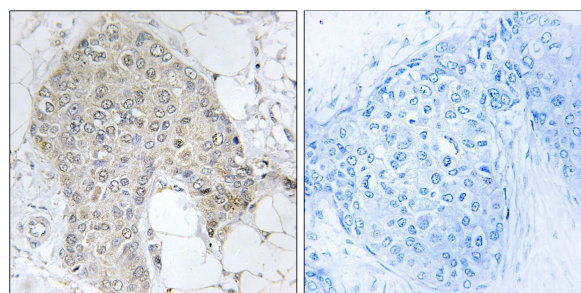
## Storage Buffer

Rabbit IgG in phosphate buffered saline (without Mg<sup>2+</sup> and Ca<sup>2+</sup>), pH 7.4, 150mM NaCl, 0.02% sodium azide and 50% glycerol.

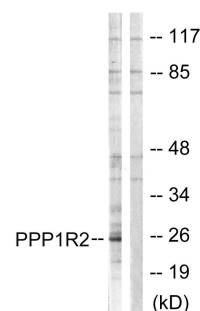
## Storage Instructions

Stable for 1 year at -20°C from date of shipment. For maximum recovery of product, centrifuge the original vial after thawing and prior to removing the cap. Aliquot to avoid repeated freezing and thawing. Aliquot will be stable at 4°C for 3 months.

## Images



Peptide - +  
Immunohistochemistry analysis of paraffin-embedded human breast carcinoma tissue using PPP1R2 (Ab-120/121) antibody.



Peptide - +  
Western blot analysis of extracts from Jurkat cells, using PPP1R2 (Ab-120/121) antibody.