

Anti-Rho/Rac Guanine Nucleotide Exchange Factor 2 Polyclonal Antibody



Catalog No.	Size
A200124-01	50µl
A200124-02	100µl

Specificity	Anti- Rho/Rac Guanine Nucleotide Exchange Factor 2 (Human Mouse)
Source	Rabbit Polyclonal
Application	WB ELISA
Form	Liquid 1 mg/ml

Background Information

Swiss-Prot No.: Q8TDA3

Other Names: GEF-H1, GEFH1, Guanine nucleotide exchange factor GEF-H1, proliferating cell nucleolar antigen p40, rho/rac guanine nucleotide exchange factor 2

Specificity and Sensitivity

Rho/Rac Guanine Nucleotide Exchange Factor 2 (Ab-885) antibody detects endogenous levels of total Rho/Rac Guanine Nucleotide Exchange Factor 2 protein.

Source and Purification

The antiserum was produced against synthesized non-phosphopeptide derived from human Rho/Rac Guanine Nucleotide Exchange Factor 2 around the phosphorylation site of serine 885 (R-R-S^P-L-P).

The antibody was affinity-purified from rabbit antiserum by affinity-chromatography using epitope-specific immunogen.

Application Notes

Optimal working dilutions should be determined experimentally by the investigator. Suggested starting dilutions are as follows:

WB: 1:500~1:3000 ELISA: 1:1000

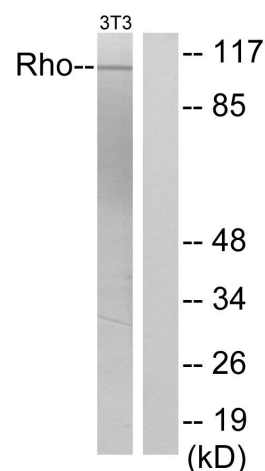
Storage Buffer

Rabbit IgG in phosphate buffered saline (without Mg²⁺ and Ca²⁺), pH 7.4, 150mM NaCl, 0.02% sodium azide and 50% glycerol.

Storage Instructions

Stable for 1 year at -20°C from date of shipment. For maximum recovery of product, centrifuge the original vial after thawing and prior to removing the cap. Aliquot to avoid repeated freezing and thawing. Aliquot will be stable at 4°C for 3 months.

Images



Peptide: - +

Western blot analysis of extracts from NIH/3T3 cells, using Rho/Rac Guanine Nucleotide Exchange Factor 2 (Ab-885) antibody.