

# Anti- $\alpha$ -Synuclein (Ab-133) Polyclonal Antibody



Catalog No.	Size
A200165-01	50 $\mu$ l
A200165-02	100 $\mu$ l

<b>Specificity</b>	Anti- $\alpha$ -Synuclein (Ab-133) (human mouse rat)
<b>Source</b>	Rabbit Polyclonal
<b>Application</b>	WB ELISA
<b>Form</b>	Liquid, 1 mg/ml

## Product

**Swiss-Prot No.:** P37840

**Other Names:** NACP, Non-A beta component of AD amyloid, Non-A4 component of amyloid precursor, SYN, SYUA, alpha-synuclein, synuclein alpha

## Specificity and Sensitivity

$\alpha$ -Synuclein (Ab-133) antibody detects endogenous levels of total  $\alpha$ -Synuclein protein.

## Source and Purification

The antiserum was produced against synthesized non-phosphopeptide derived from human  $\alpha$ -Synuclein around the phosphorylation site of tyrosine 133 (E-G-Y-Q-D).

The antibody was affinity-purified from rabbit antiserum by affinity-chromatography using epitope-specific immunogen.

## Application Notes

Optimal working dilutions should be determined experimentally by the investigator. Suggested starting dilutions are as follows:

WB: 1:500~1:3000                      ELISA: 1:20000

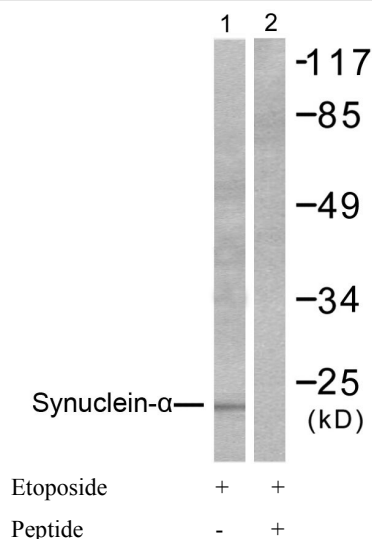
## Storage Buffer

Rabbit IgG in phosphate buffered saline (without  $Mg^{2+}$  and  $Ca^{2+}$ ), pH 7.4, 150mM NaCl, 0.02% sodium azide and 50% glycerol.

## Storage Instructions

Stable for 1 year at  $-20^{\circ}\text{C}$  from date of shipment. For maximum recovery of product, centrifuge the original vial after thawing and prior to removing the cap. Aliquot to avoid repeated freezing and thawing. Aliquot will be stable at  $4^{\circ}\text{C}$  for 3 months.

## Images



Western blot analysis of extracts from 293 cells, treated with Etoposide (25 $\mu$ M, 60mins), using  $\alpha$ -Synuclein (Ab-133) antibody (, Line 1 and 2).